

Office Suites for Lease

# 1600 Market Street

Philadelphia, PA 19103

## Property Features

- Property Manager on-site
- Conference facility
- On-site banking
- Parking available
- Strong vested ownership
- Excellent finishes with residual value

## Location Features

- Market Street location
- Great CBD location
- Close to City Hall and Suburban Station
- Easy access to multiple SEPTA bus stops, regional railways, and subways

For more information, please contact:



Tom Hummel  
thummel@geisrealty.com  
(215) 568-2505

Dan Moller  
dmoller@geisrealty.com  
(215) 701-0722

Owned by:



Duane Morris Plaza // 30 South 17th Street, Suite 810, Philadelphia, PA 19103 // (215) 568-7222 Tel // (215) 568-5043 Fax // geisrealty.com

No warranty or representation, express or implied, is made as to the accuracy of the information contained herein, and the same is submitted subject to errors, omissions, change of price, rental or other conditions, prior sale, lease or financing, or withdrawal without notice, and of any special listing conditions imposed by our principals no warranties or representations are made as to the condition of the property or any hazards contained therein are any to be implied.



Office Suites for Lease

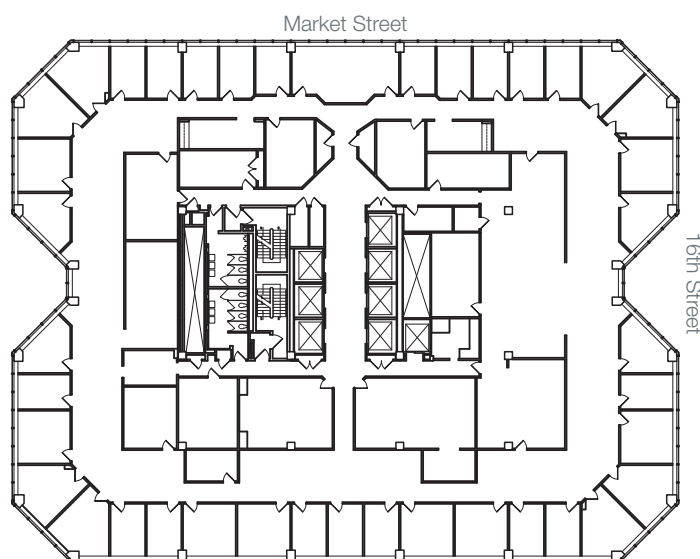
# 1600 Market Street

Philadelphia, PA 19103



## Availabilities

34th Floor – entire floor	22,502 SF
25th Floor	11,634 SF
20th Floor	15,775 SF
18th Floor	13,363 SF
17th Floor	7,675 SF
16th Floor	3,133 SF
15th Floor	9,331 SF
14th Floor	2,203 SF
13th Floor	6,323 SF
12th Floor – entire floor	21,624 SF
5th Floor	4,058 SF



For more information, please contact:



Tom Hummel  
thummel@geisrealty.com  
(215) 568-2505

Dan Moller  
dmoller@geisrealty.com  
(215) 701-0722

Owned by:



Duane Morris Plaza // 30 South 17th Street, Suite 810, Philadelphia, PA 19103 // (215) 568-7222 Tel // (215) 568-5043 Fax // geisrealty.com

No warranty or representation, express or implied, is made as to the accuracy of the information contained herein, and the same is submitted subject to errors, omissions, change of price, rental or other conditions, prior sale, lease or financing, or withdrawal without notice, and of any special listing conditions imposed by our principals no warranties or representations are made as to the condition of the property or any hazards contained therein are any to be implied.

Office Suites for Lease

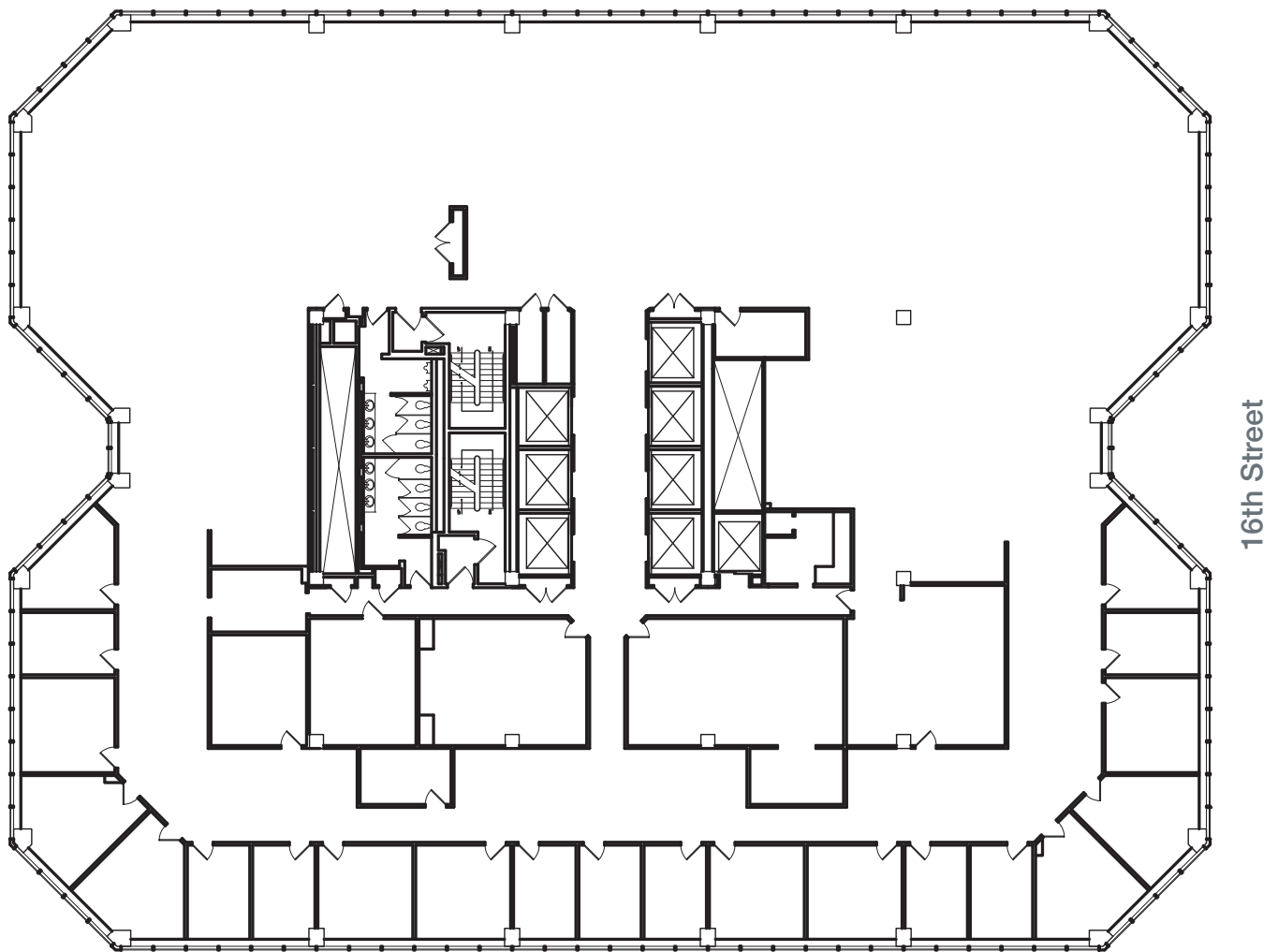
# 1600 Market Street

Philadelphia, PA 19103

## 34th Floor – entire floor

22,502 SF

Market Street



For more information, please contact:



Tom Hummel  
thummel@geisrealty.com  
(215) 568-2505

Dan Moller  
dmoller@geisrealty.com  
(215) 701-0722

Owned by:



Duane Morris Plaza // 30 South 17th Street, Suite 810, Philadelphia, PA 19103 // (215) 568-7222 Tel // (215) 568-5043 Fax // geisrealty.com

No warranty or representation, express or implied, is made as to the accuracy of the information contained herein, and the same is submitted subject to errors, omissions, change of price, rental or other conditions, prior sale, lease or financing, or withdrawal without notice, and of any special listing conditions imposed by our principals no warranties or representations are made as to the condition of the property or any hazards contained therein are any to be implied.

Office Suites for Lease

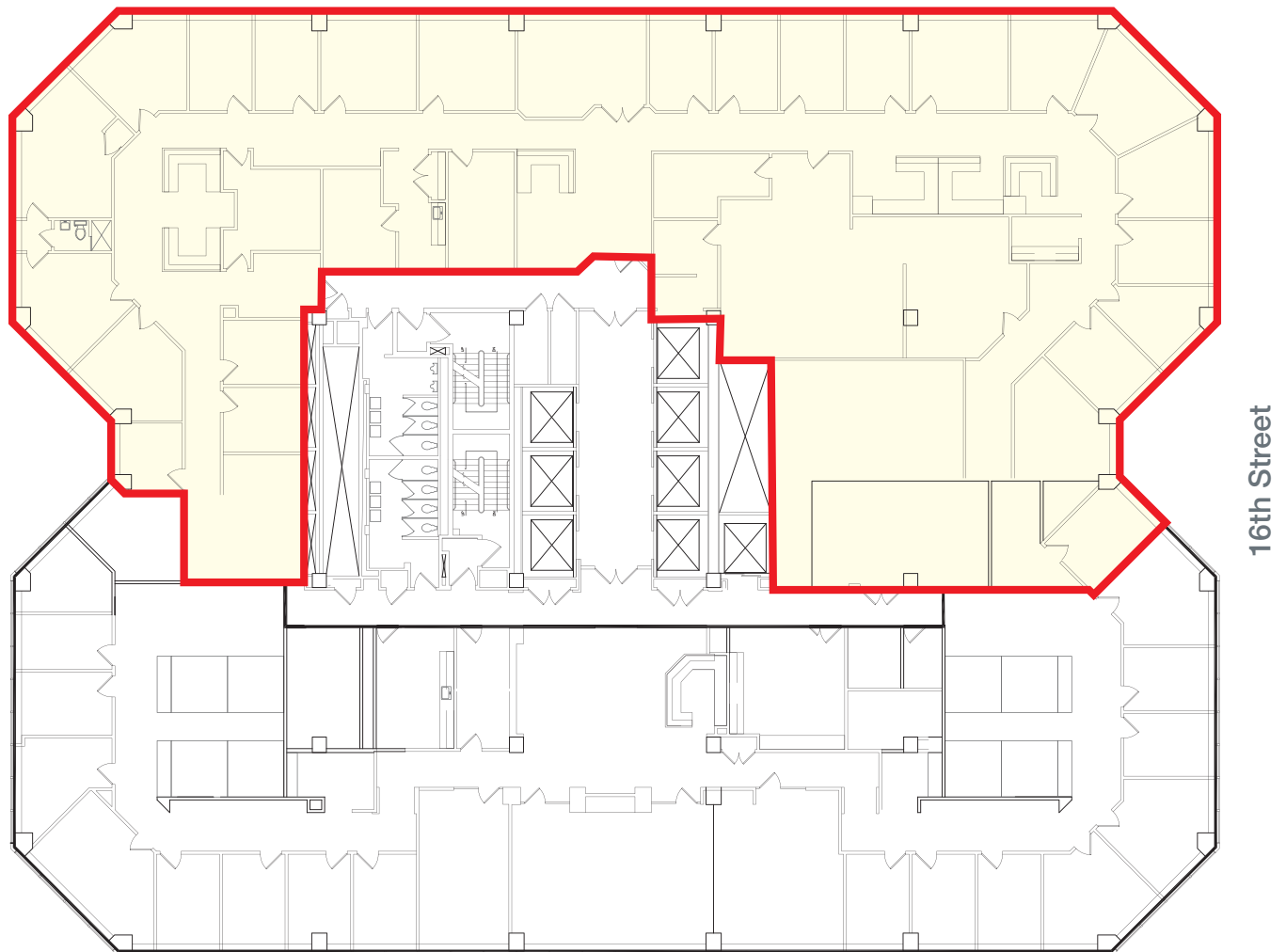
# 1600 Market Street

Philadelphia, PA 19103

## 25th Floor

11,634 SF

Market Street



For more information, please contact:



Tom Hummel  
thummel@geisrealty.com  
(215) 568-2505

Dan Moller  
dmoller@geisrealty.com  
(215) 701-0722

Owned by:



Duane Morris Plaza // 30 South 17th Street, Suite 810, Philadelphia, PA 19103 // (215) 568-7222 Tel // (215) 568-5043 Fax // geisrealty.com

No warranty or representation, express or implied, is made as to the accuracy of the information contained herein, and the same is submitted subject to errors, omissions, change of price, rental or other conditions, prior sale, lease or financing, or withdrawal without notice, and of any special listing conditions imposed by our principals no warranties or representations are made as to the condition of the property or any hazards contained therein are any to be implied.

Office Suites for Lease

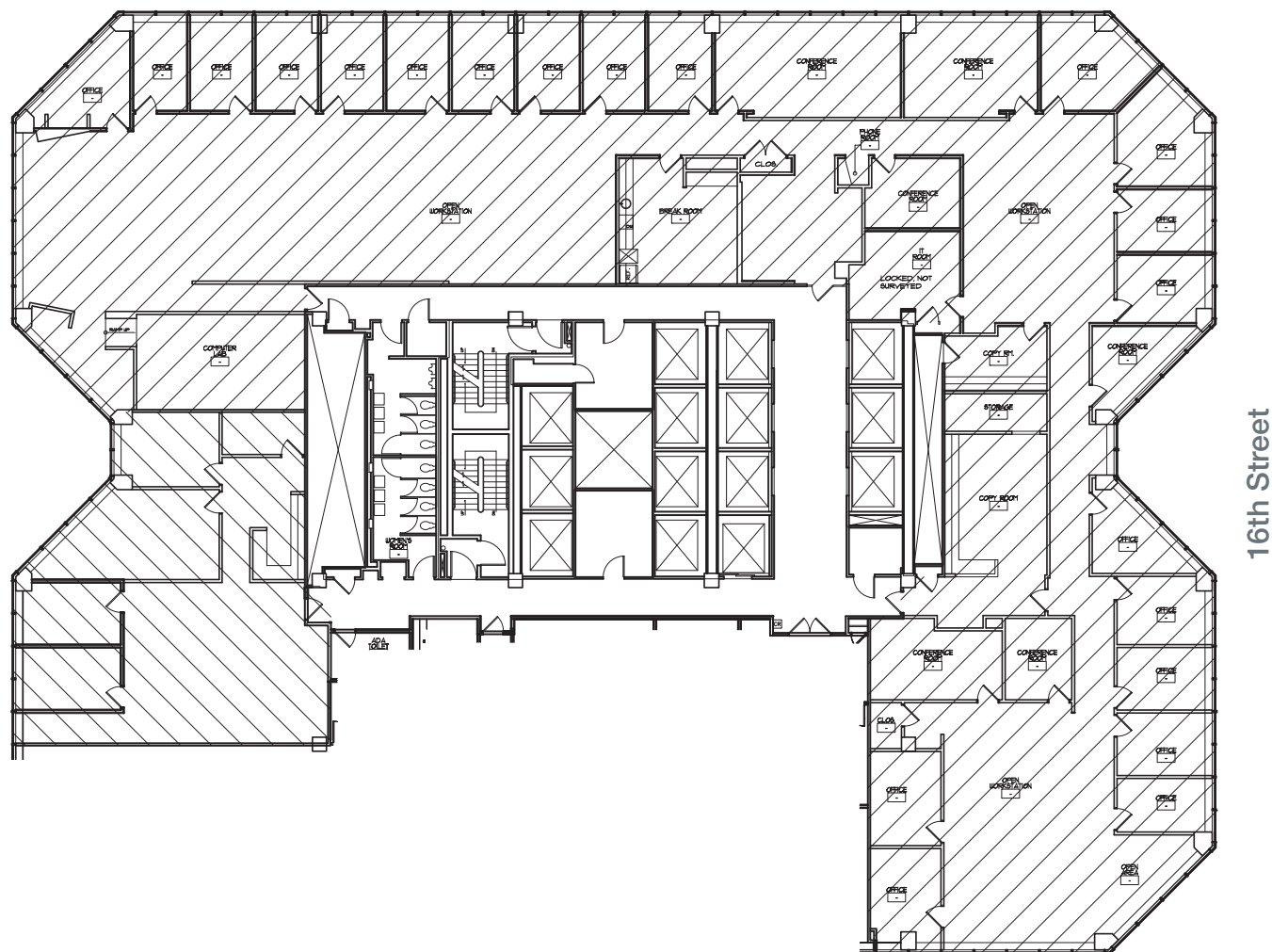
# 1600 Market Street

Philadelphia, PA 19103

## 20th Floor

15,775 SF

Market Street



For more information, please contact:



Tom Hummel  
thummel@geisrealty.com  
(215) 568-2505

Dan Moller  
dmoller@geisrealty.com  
(215) 701-0722

Owned by:



Duane Morris Plaza // 30 South 17th Street, Suite 810, Philadelphia, PA 19103 // (215) 568-7222 Tel // (215) 568-5043 Fax // geisrealty.com

No warranty or representation, express or implied, is made as to the accuracy of the information contained herein, and the same is submitted subject to errors, omissions, change of price, rental or other conditions, prior sale, lease or financing, or withdrawal without notice, and of any special listing conditions imposed by our principals no warranties or representations are made as to the condition of the property or any hazards contained therein are any to be implied.

Office Suites for Lease

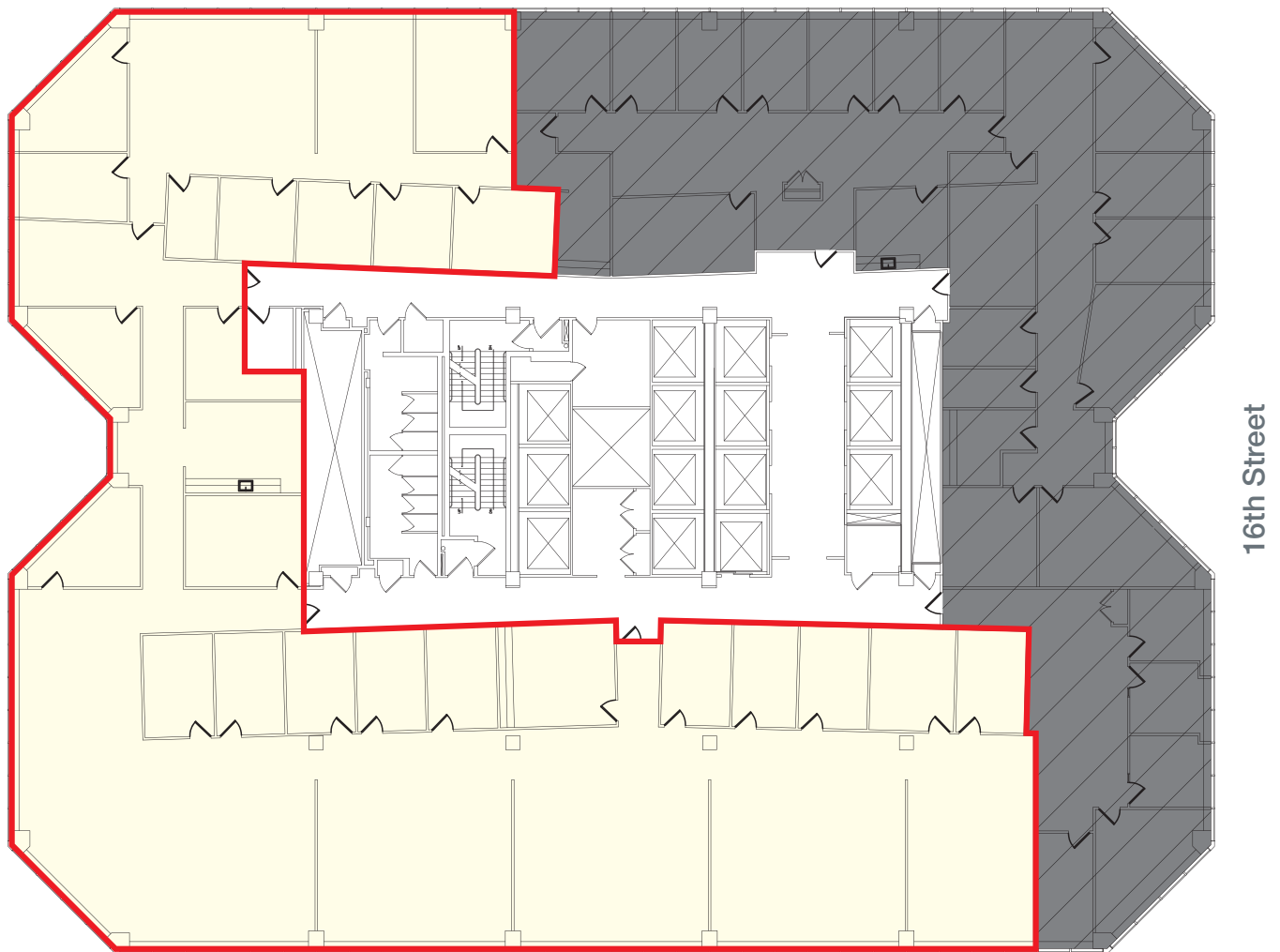
# 1600 Market Street

Philadelphia, PA 19103

## 18th Floor

13,363 SF

Market Street



For more information, please contact:



Tom Hummel  
thummel@geisrealty.com  
(215) 568-2505

Dan Moller  
dmoller@geisrealty.com  
(215) 701-0722

Owned by:



Duane Morris Plaza // 30 South 17th Street, Suite 810, Philadelphia, PA 19103 // (215) 568-7222 Tel // (215) 568-5043 Fax // geisrealty.com

No warranty or representation, express or implied, is made as to the accuracy of the information contained herein, and the same is submitted subject to errors, omissions, change of price, rental or other conditions, prior sale, lease or financing, or withdrawal without notice, and of any special listing conditions imposed by our principals no warranties or representations are made as to the condition of the property or any hazards contained therein are any to be implied.

Office Suites for Lease

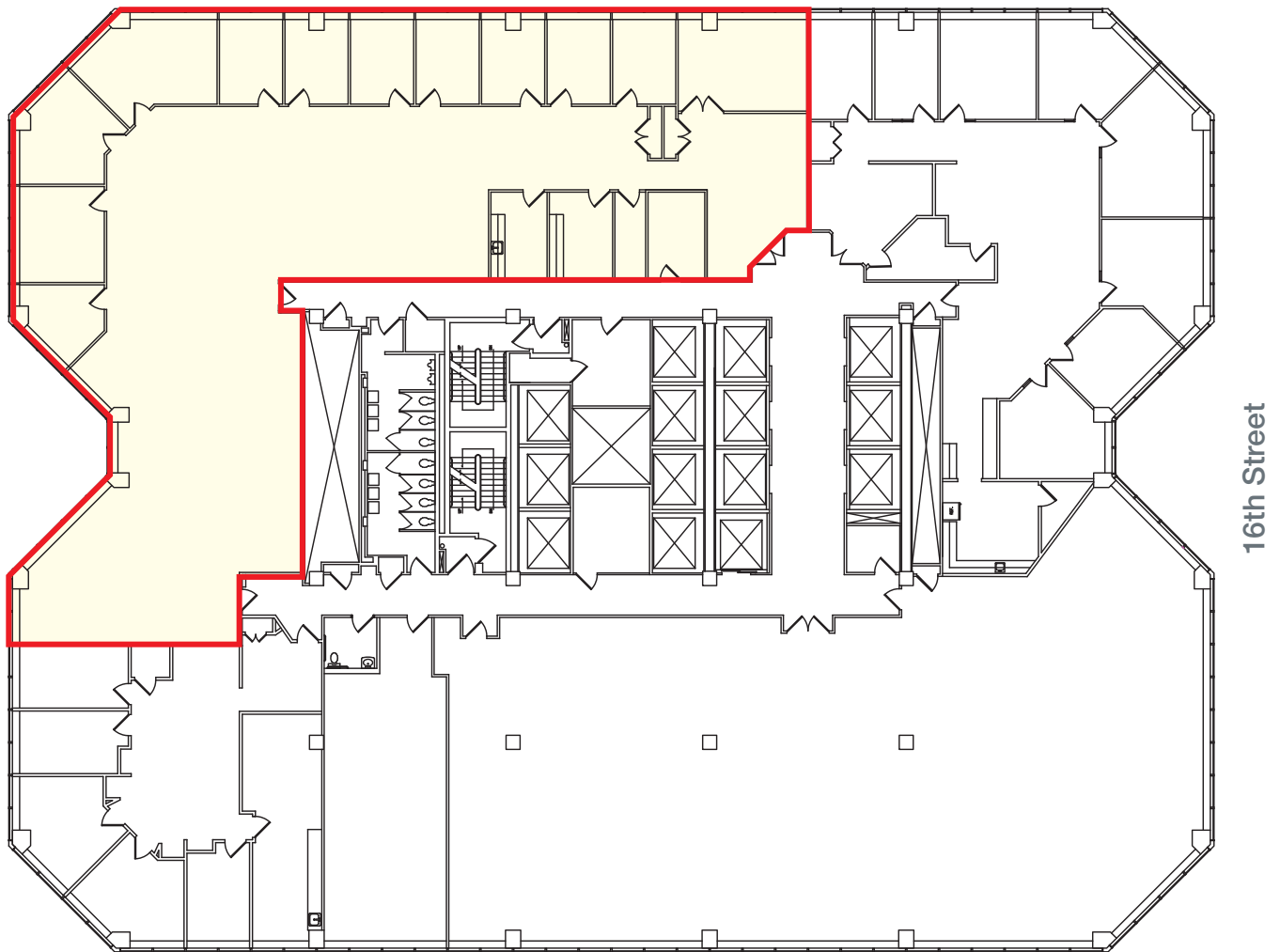
# 1600 Market Street

Philadelphia, PA 19103

## 17th Floor

7,675 SF

Market Street



For more information, please contact:



Tom Hummel  
thummel@geisrealty.com  
(215) 568-2505

Dan Moller  
dmoller@geisrealty.com  
(215) 701-0722

Owned by:



Duane Morris Plaza // 30 South 17th Street, Suite 810, Philadelphia, PA 19103 // (215) 568-7222 Tel // (215) 568-5043 Fax // geisrealty.com

No warranty or representation, express or implied, is made as to the accuracy of the information contained herein, and the same is submitted subject to errors, omissions, change of price, rental or other conditions, prior sale, lease or financing, or withdrawal without notice, and of any special listing conditions imposed by our principals no warranties or representations are made as to the condition of the property or any hazards contained therein are any to be implied.

Office Suites for Lease

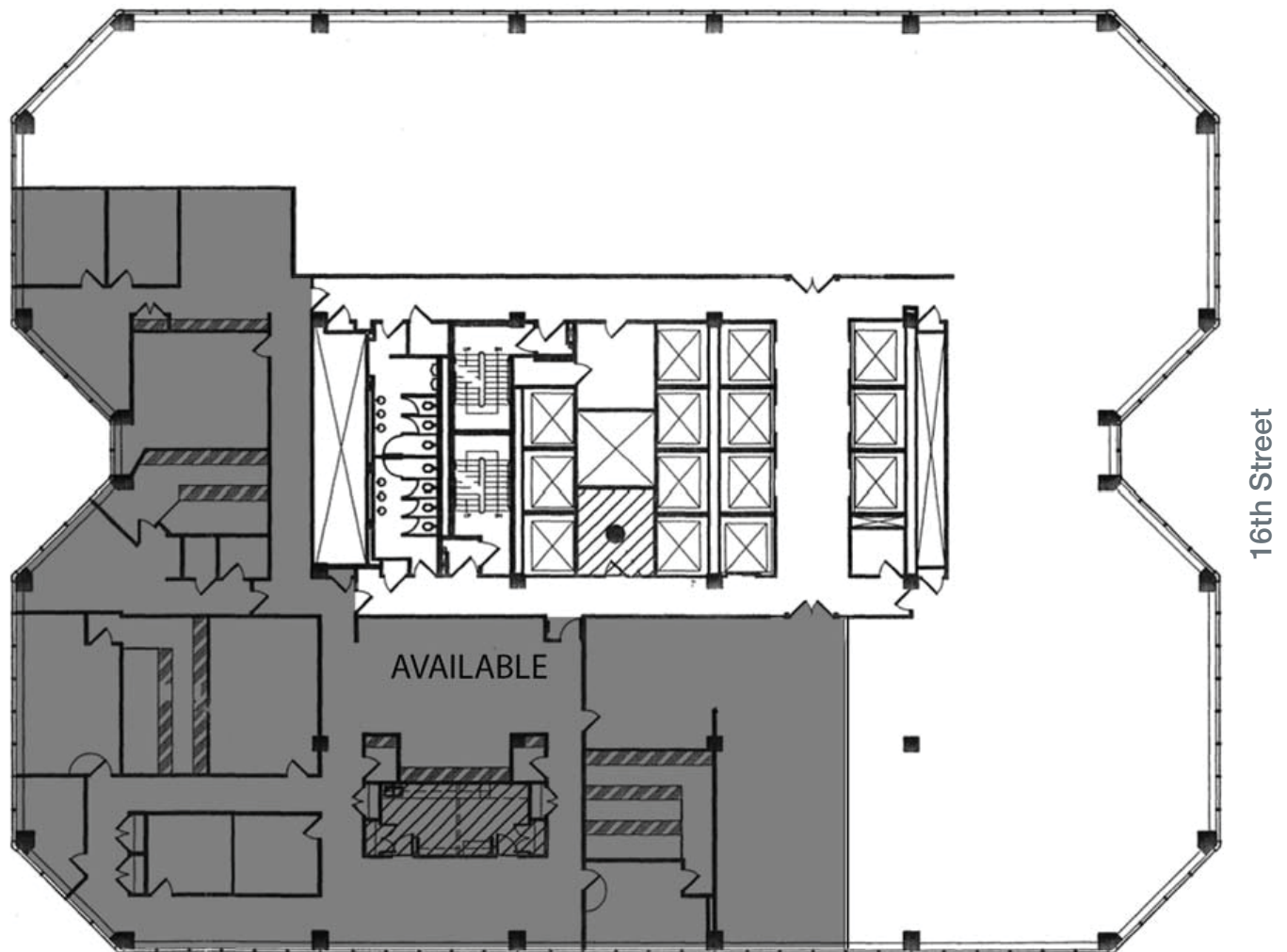
# 1600 Market Street

Philadelphia, PA 19103

## 15th Floor

9,331 SF

Market Street



For more information, please contact:



Tom Hummel  
thummel@geisrealty.com  
(215) 568-2505

Dan Moller  
dmoller@geisrealty.com  
(215) 701-0722

Owned by:



Duane Morris Plaza // 30 South 17th Street, Suite 810, Philadelphia, PA 19103 // (215) 568-7222 Tel // (215) 568-5043 Fax // geisrealty.com

No warranty or representation, express or implied, is made as to the accuracy of the information contained herein, and the same is submitted subject to errors, omissions, change of price, rental or other conditions, prior sale, lease or financing, or withdrawal without notice, and of any special listing conditions imposed by our principals no warranties or representations are made as to the condition of the property or any hazards contained therein are any to be implied.



Office Suites for Lease

# 1600 Market Street

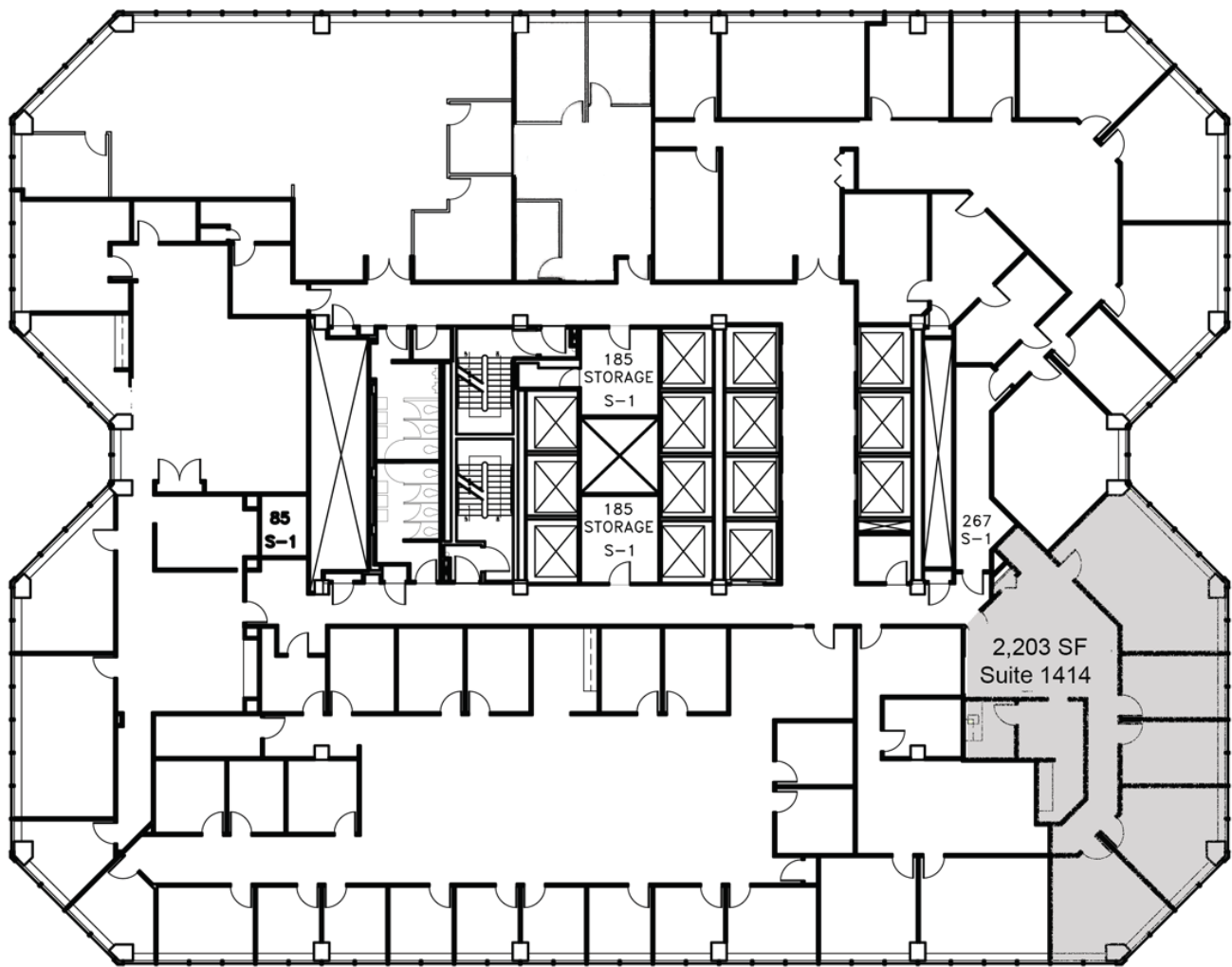
Philadelphia, PA 19103

## 14th Floor

2,203 SF

Market Street

16th Street



For more information, please contact:



Tom Hummel  
thummel@geisrealty.com  
(215) 568-2505

Dan Moller  
dmoller@geisrealty.com  
(215) 701-0722

Owned by:



Duane Morris Plaza // 30 South 17th Street, Suite 810, Philadelphia, PA 19103 // (215) 568-7222 Tel // (215) 568-5043 Fax // geisrealty.com

No warranty or representation, express or implied, is made as to the accuracy of the information contained herein, and the same is submitted subject to errors, omissions, change of price, rental or other conditions, prior sale, lease or financing, or withdrawal without notice, and of any special listing conditions imposed by our principals no warranties or representations are made as to the condition of the property or any hazards contained therein are any to be implied.

Office Suites for Lease

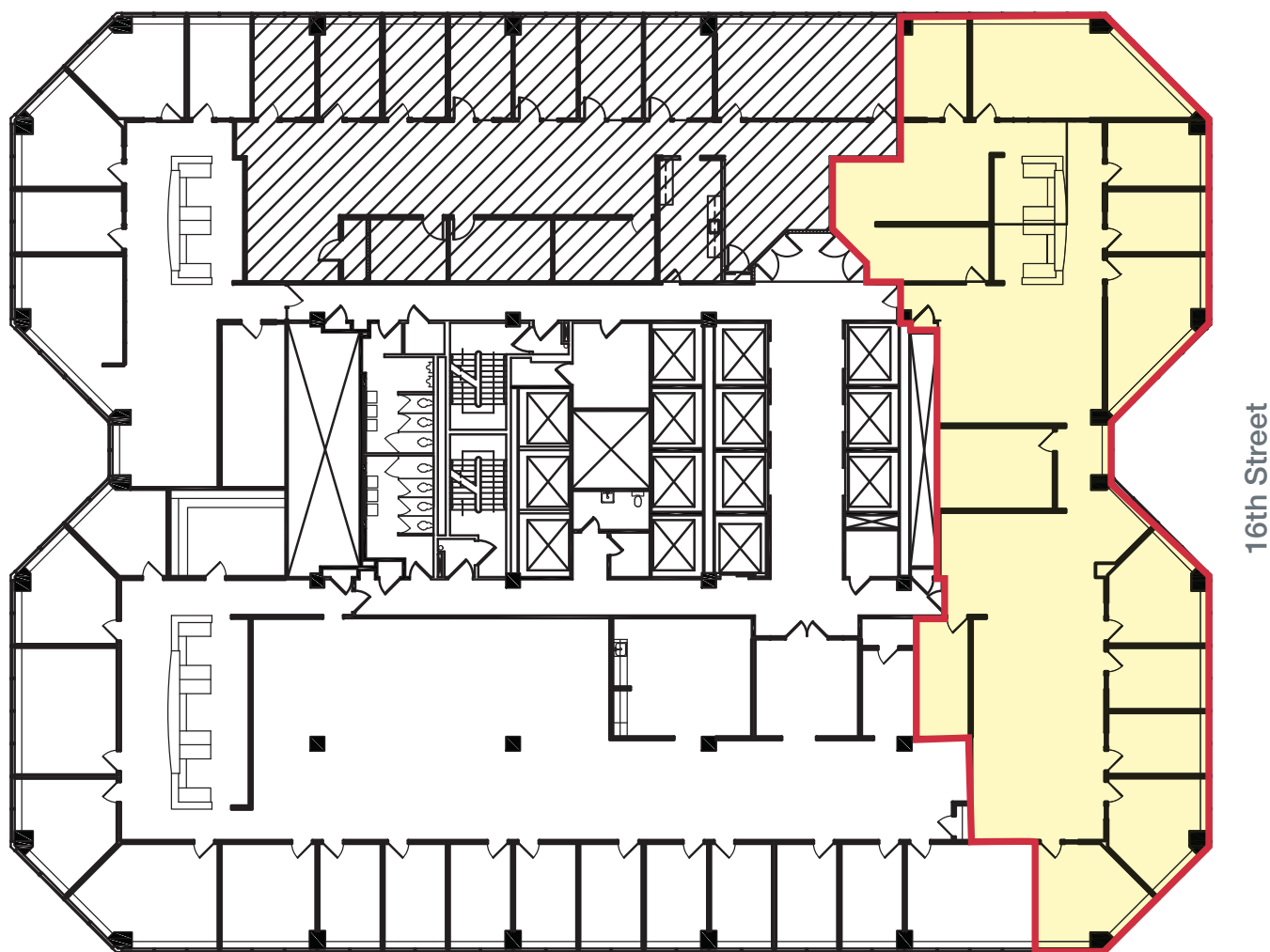
# 1600 Market Street

Philadelphia, PA 19103

## 13th Floor

6,323 SF

Market Street



For more information, please contact:



Tom Hummel  
thummel@geisrealty.com  
(215) 568-2505

Dan Moller  
dmoller@geisrealty.com  
(215) 701-0722

Owned by:



Duane Morris Plaza // 30 South 17th Street, Suite 810, Philadelphia, PA 19103 // (215) 568-7222 Tel // (215) 568-5043 Fax // geisrealty.com

No warranty or representation, express or implied, is made as to the accuracy of the information contained herein, and the same is submitted subject to errors, omissions, change of price, rental or other conditions, prior sale, lease or financing, or withdrawal without notice, and of any special listing conditions imposed by our principals no warranties or representations are made as to the condition of the property or any hazards contained therein are any to be implied.

Office Suites for Lease

# 1600 Market Street

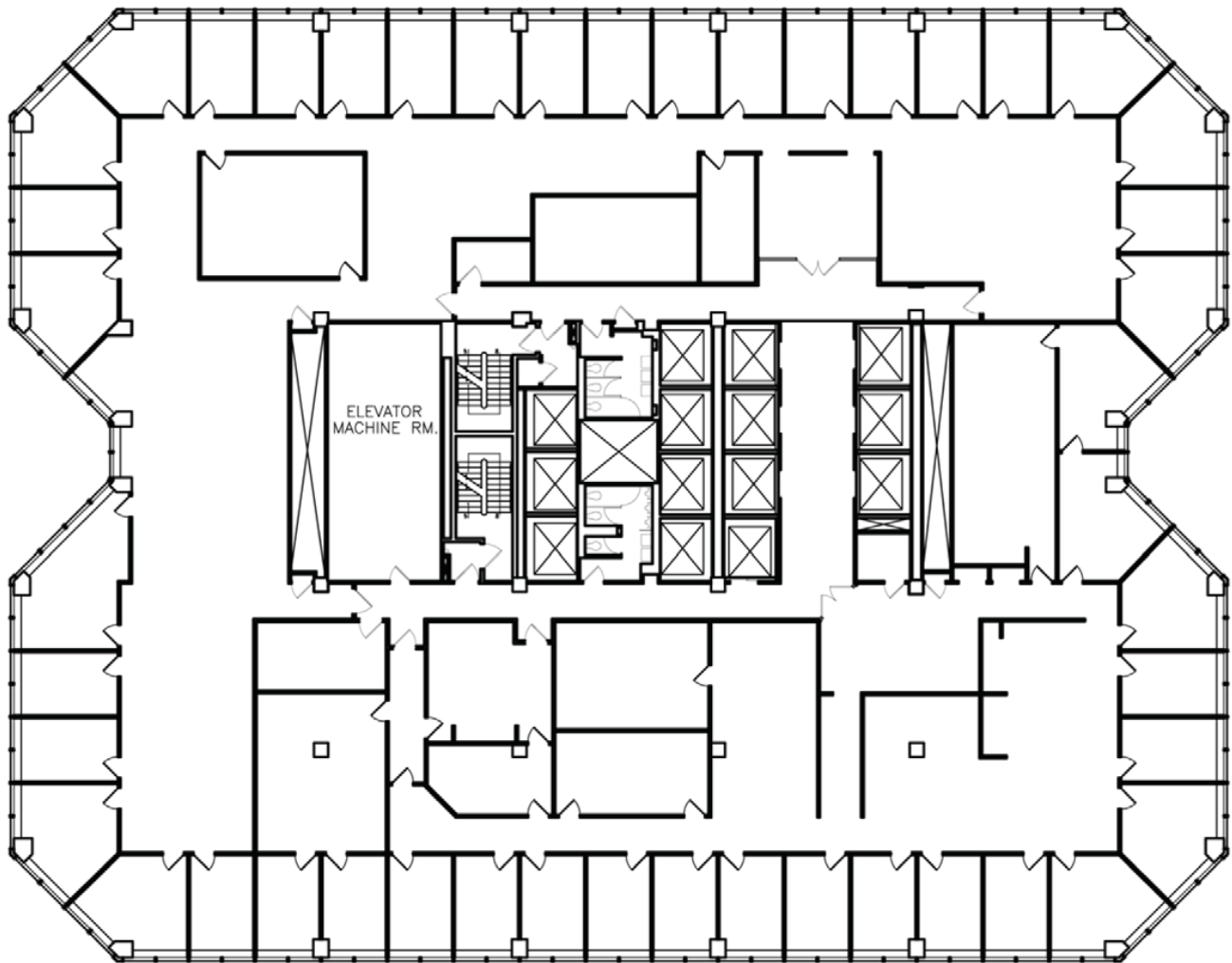
Philadelphia, PA 19103

## 12th Floor – entire floor

21,624 SF

Market Street

16th Street



For more information, please contact:



Tom Hummel  
thummel@geisrealty.com  
(215) 568-2505

Dan Moller  
dmoller@geisrealty.com  
(215) 701-0722

Owned by:



Duane Morris Plaza // 30 South 17th Street, Suite 810, Philadelphia, PA 19103 // (215) 568-7222 Tel // (215) 568-5043 Fax // geisrealty.com

No warranty or representation, express or implied, is made as to the accuracy of the information contained herein, and the same is submitted subject to errors, omissions, change of price, rental or other conditions, prior sale, lease or financing, or withdrawal without notice, and of any special listing conditions imposed by our principals no warranties or representations are made as to the condition of the property or any hazards contained therein are any to be implied.

Office Suites for Lease

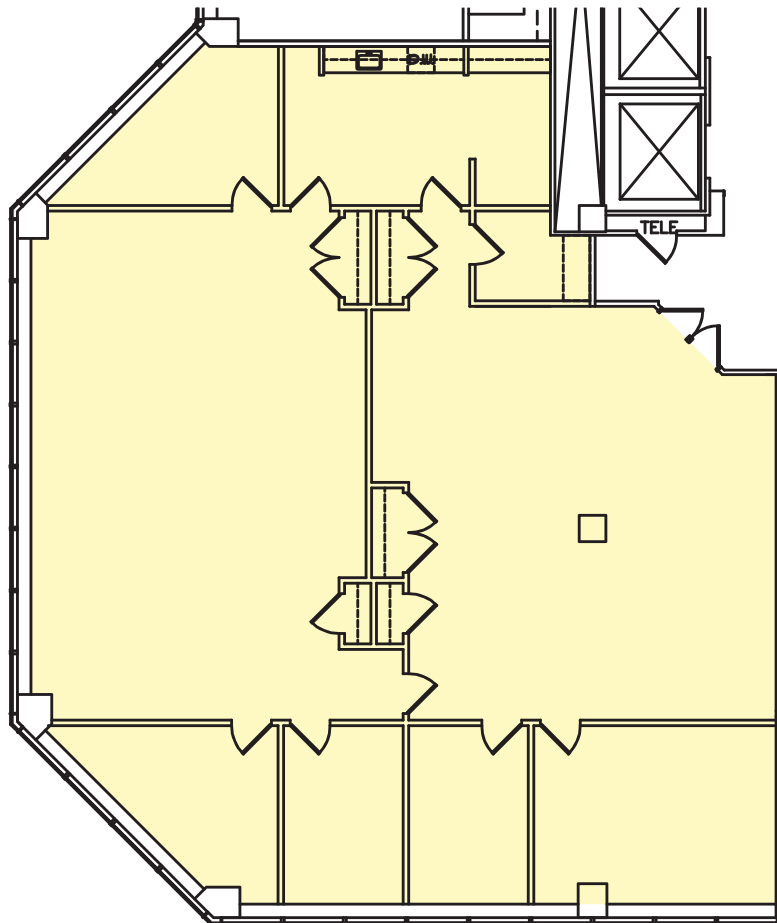
# 1600 Market Street

Philadelphia, PA 19103

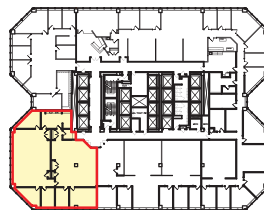
## 5th Floor

4,058 SF

Market Street



16th Street



For more information, please contact:



Tom Hummel  
thummel@geisrealty.com  
(215) 568-2505

Dan Moller  
dmoller@geisrealty.com  
(215) 701-0722

Owned by:



Duane Morris Plaza // 30 South 17th Street, Suite 810, Philadelphia, PA 19103 // (215) 568-7222 Tel // (215) 568-5043 Fax // geisrealty.com

No warranty or representation, express or implied, is made as to the accuracy of the information contained herein, and the same is submitted subject to errors, omissions, change of price, rental or other conditions, prior sale, lease or financing, or withdrawal without notice, and of any special listing conditions imposed by our principals no warranties or representations are made as to the condition of the property or any hazards contained therein are any to be implied.