

100 CARNIE BLVD, VOORHEES, NJ

MEDICAL OFFICE SPACE AVAILABLE FOR LEASE



For more information, please contact:

Tom Hummel

thummel@geisrealty.com

215.568.2505

Dan Moller

dmoller@geisrealty.com

215.701.0722

Owned &
Managed By:



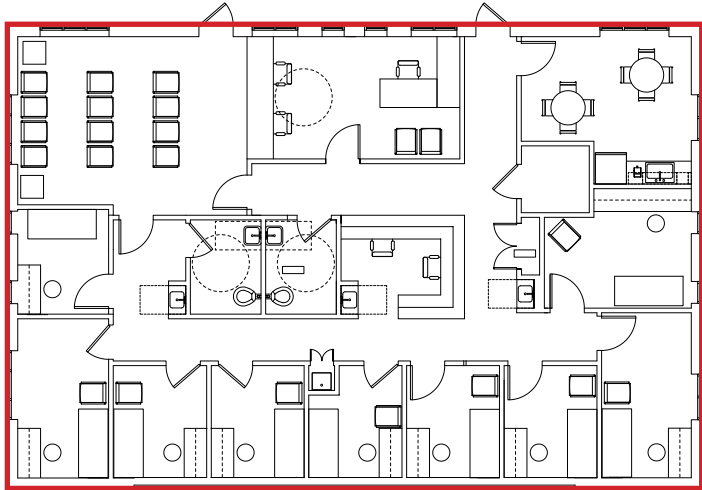
THOMAS PARK
INVESTMENTS

No warranty or representation, express or implied, is made as to the accuracy of the information contained herein, and the same is submitted subject to errors, omissions, change of price, rental or other conditions, prior sale, lease or financing, or withdrawal without notice, and of any special listing conditions imposed by our principals no warranties or representations are made as to the condition of the property or any hazards contained therein are any to be implied.

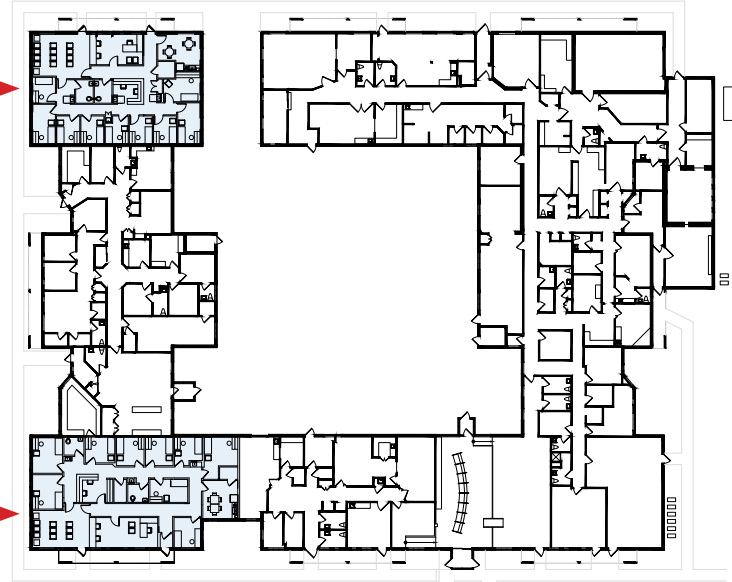
100 CARNIE BLVD, VOORHEES, NJ

MEDICAL OFFICE SPACE AVAILABLE FOR LEASE

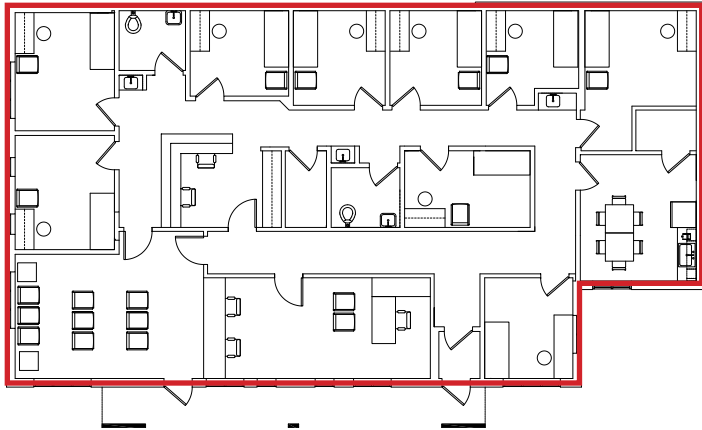
CONCEPT PLANS



← Suite A1-A2
2,359 RSF →



← Suite A5-A6
2,746 RSF →



Property Highlights

- Attractive medical campus
- Adjacent to a daycare center
- Minutes from Virtua Voorhees Hospital
- Great access to area amenities and major transportation arteries

[Click here to explore Suites A5|A6 in 3D](#)



For more information, please contact:

Tom Hummel

thummel@geisrealty.com
215.568.2505

Dan Moller

dmoller@geisrealty.com
215.701.0722

Owned &
Managed By:  **THOMAS PARK**
INVESTMENTS

100 CARNIE BLVD, VOORHEES, NJ

MEDICAL OFFICE SPACE AVAILABLE FOR LEASE

SUITE A5-A6
CONCEPT RENDERINGS

A5-A6 BREAKROOM



A5-A6 EXAM ROOM



A5-A6 NURSES STATION



A5-A6 RECEPTION



A5-A6 WAITING ROOM



A5-A6 WASHROOM



For more information, please contact:

Tom Hummel

thummel@geisrealty.com

215.568.2505

Dan Moller

dmoller@geisrealty.com

215.701.0722

Owned &
Managed By:  **THOMAS PARK**
INVESTMENTS

No warranty or representation, express or implied, is made as to the accuracy of the information contained herein, and the same is submitted subject to errors, omissions, change of price, rental or other conditions, prior sale, lease or financing, or withdrawal without notice, and of any special listing conditions imposed by our principals no warranties or representations are made as to the condition of the property or any hazards contained therein are any to be implied.

100 CARNIE BLVD, VOORHEES, NJ

MEDICAL OFFICE SPACE AVAILABLE FOR LEASE



For more information, please contact:

Tom Hummel
thummel@geisrealty.com
215.568.2505

Dan Moller
dmoller@geisrealty.com
215.701.0722

Owned &
Managed By:  **THOMAS PARK**
INVESTMENTS

No warranty or representation, express or implied, is made as to the accuracy of the information contained herein, and the same is submitted subject to errors, omissions, change of price, rental or other conditions, prior sale, lease or financing, or withdrawal without notice, and of any special listing conditions imposed by our principals no warranties or representations are made as to the condition of the property or any hazards contained therein are any to be implied.