



# Andrew Executive Center

**1060 Andrew Drive**  
West Chester, PA 19380

## Property Highlights

### **Flexible Sizing:**

Accommodates a wide range of needs with available suites from 2,613 to 8,667 square feet.

### **Move-In Ready:**

Features premium, high-end finishes, allowing for immediate occupancy.

### **Versatile Use:**

Ideally suited for both medical practices and professional office tenants.

### **Building Upgrades:**

The property has been recently renovated with a modern lobby, updated common areas, and an upgraded HVAC system.

### **Convenient Access:**

Offers the benefit of direct, private entry into the suite.

### **Excellent Visibility:**

Provides a fantastic opportunity for prominent signage on Phoenixville Pike.

### **Prime Location:**

Situated near downtown West Chester, Route 202, and the Chester County Hospital.

### **Professional Management:**

The property is overseen by a highly qualified and experienced ownership group.



**Adam Knox**  
aknox@geisrealty.com

[www.geisrealty.com](http://www.geisrealty.com)  
(610) 989-0300

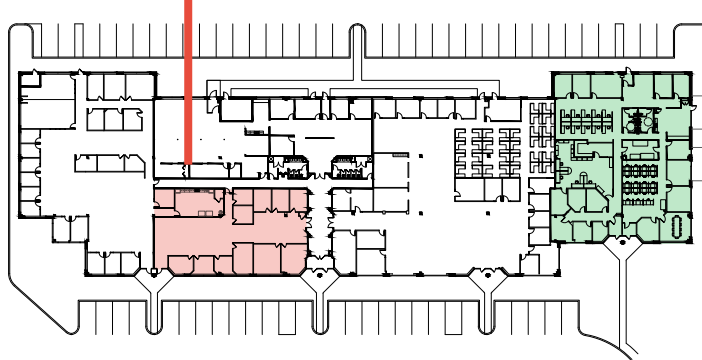
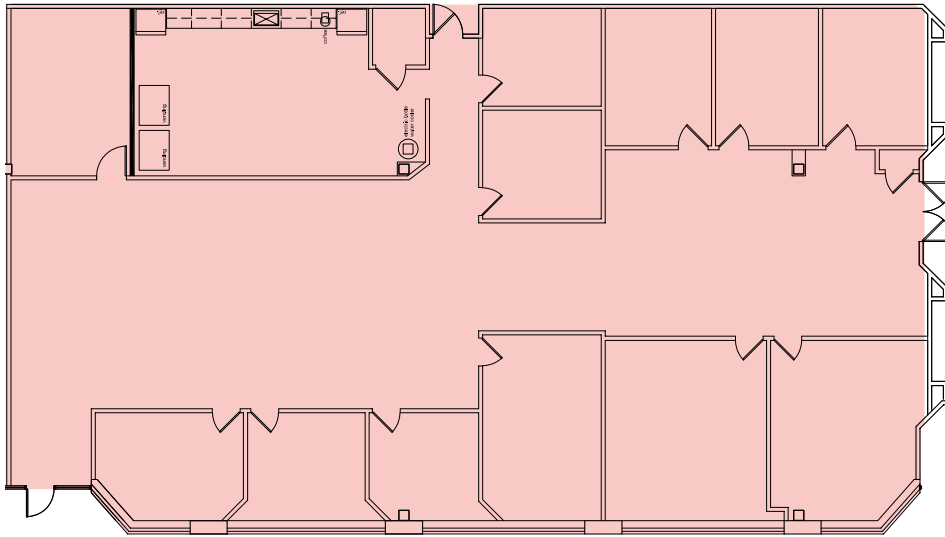
No warranty or representation, express or implied, is made as to the accuracy of the information contained herein, and the same is submitted subject to errors, omissions, change of price, rental or other conditions, prior sale, lease or financing, or withdrawal without notice, and of any special listing conditions imposed by our principals no warranties or representations are made as to the condition of the property or any hazards contained therein are any to be implied.

# Andrew Executive Center

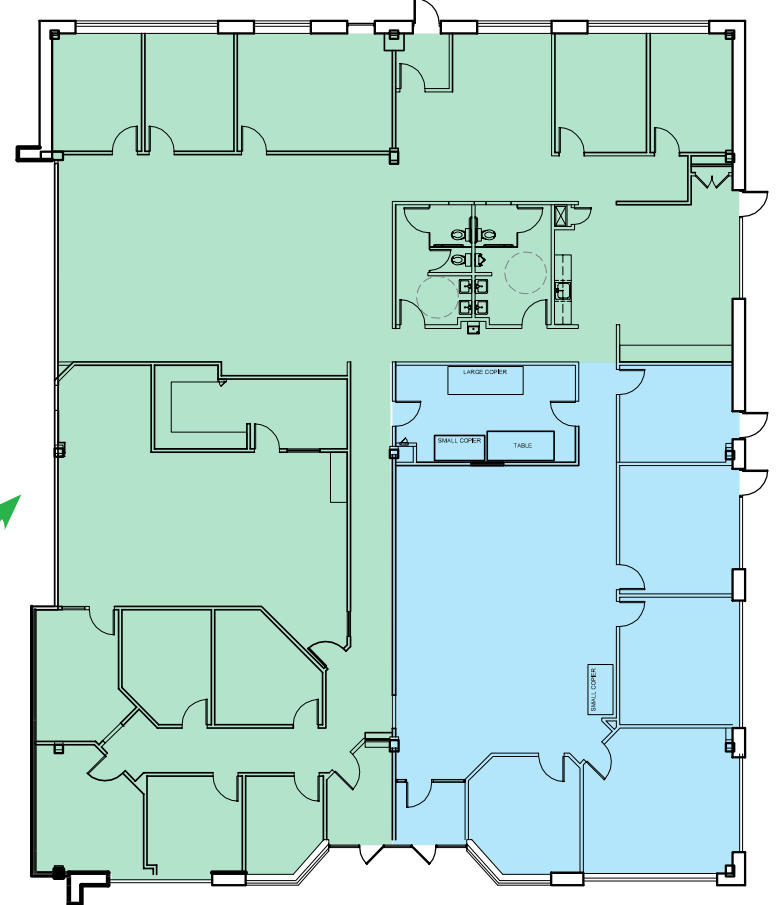
1060 Andrew Drive  
West Chester, PA 19380



Suite 120: 4,128 SF



Suite 170: 8,667 SF - Divisible



6,054 SF

2,613 SF

8,667 SF



# Andrew Executive Center

1060 Andrew Drive  
West Chester, PA 19380

