

# Paoli Corporate Center

16 Industrial Boulevard Paoli, PA

Office Space  
Available for Lease  
Suites Available Immediately



Medical | Legal | Architect | Accounting | Consulting



## Property Highlights

- Scenic setting
- Flexible rates and terms
- On-site management
- Located immediately in front of Paoli Hospital's main entrance
- Convenient access to Route 202 and the PA Turnpike
- Flexible terms
- Turnkey improvements
- High ceilings throughout

## Availability

- Suite 120 . . . . . 1,488 SF
- Suite 214 . . . . . 1,745 SF

For more information, please contact:



Adam Knox  
aknox@geisrealty.com  
(610) 989-0300

996 Old Eagle School Road  
Suite 1117  
Wayne, PA 19087

(610) 989-0300 Tel  
(610) 989-0234 Fax  
www.geisrealty.com

No warranty or representation, express or implied, is made as to the accuracy of the information contained herein, and the same is submitted subject to errors, omissions, change of price, rental or other conditions, prior sale, lease or financing, or withdrawal without notice, and of any special listing conditions imposed by our principals no warranties or representations are made as to the condition of the property or any hazards contained therein are any to be implied.

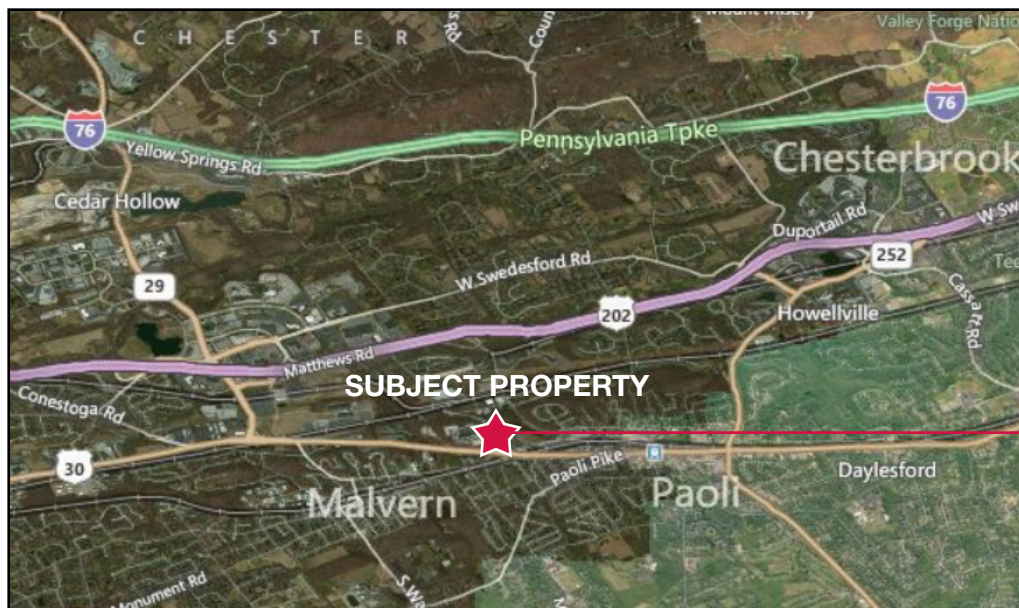


For Lease

# 16 Industrial Boulevard

Paoli, Pennsylvania

## Close proximity to Paoli Hospital



For more information, please contact:

**NAI** Geis Realty  
Group, Inc.

Adam Knox  
aknox@geisrealty.com  
(610) 989-0300

996 Old Eagle School Road  
Suite 1117  
Wayne, PA 19087

(610) 989-0300 Tel  
(610) 989-0234 Fax  
www.geisrealty.com

No warranty or representation, express or implied, is made as to the accuracy of the information contained herein, and the same is submitted subject to errors, omissions, change of price, rental or other conditions, prior sale, lease or financing, or withdrawal without notice, and of any special listing conditions imposed by our principals no warranties or representations are made as to the condition of the property or any hazards contained therein are any to be implied.