

# 1740 South Street, Philadelphia, PA

Medical Office Space for Available for Lease



## BUILDING HIGHLIGHTS

- Located in the Graduate Hospital neighborhood
- Ample access to public transportation
- Surface and garage parking facilities located within convenient walking distance
- Adjoining 5-story public parking garage with internal direct connection to the property



## AVAILABILITY

- Suite 403: 699 RSF
- Suite 505: 1,138 RSF

## LEASING INFORMATION

Tom Hummel  
thummel@geisrealty.com  
215.568.2505

Dan Moller  
dmoller@geisrealty.com  
215.701.0722

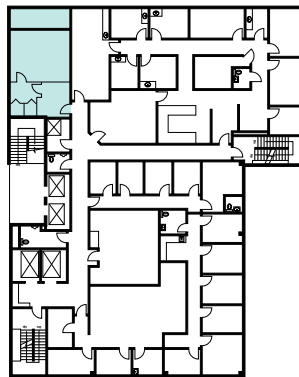
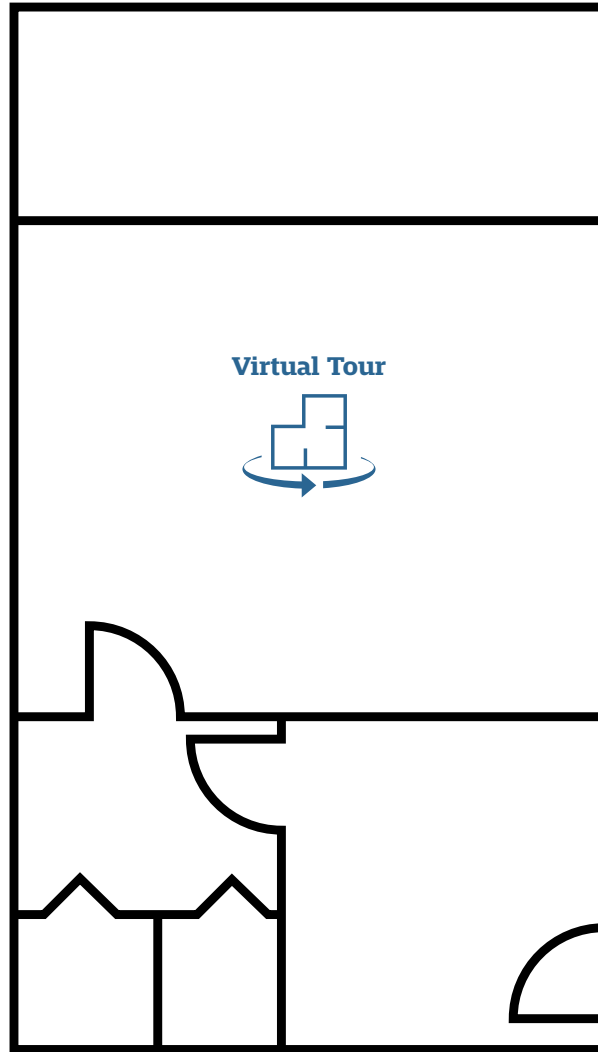
Building owned and managed by  
**HEALTHCARE REALTY**

**NAI** Geis Realty  
Group, Inc.

# 1740 South Street, Philadelphia, PA

Medical Office Space for Available for Lease

Suite 403: 699 RSF



Building owned and managed by  
**HEALTHCARE REALTY**



#### LEASING INFORMATION

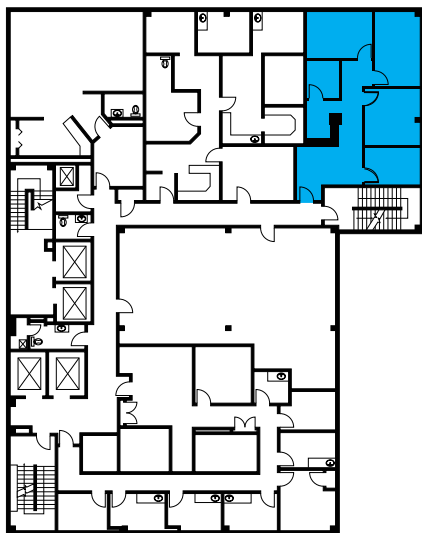
Tom Hummel  
thummel@geisrealty.com  
215.568.2505

Dan Moller  
dmoller@geisrealty.com  
215.701.0722

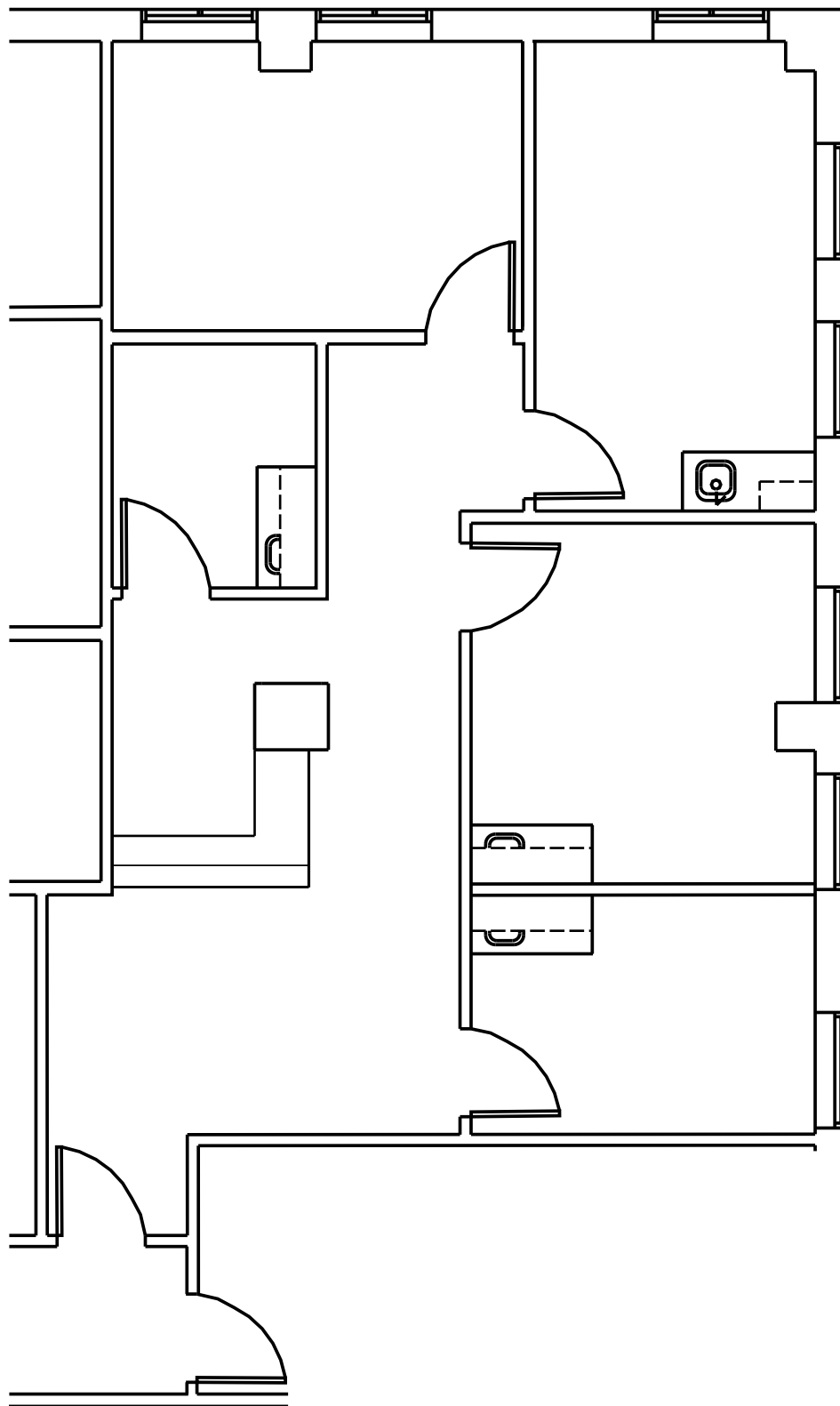
# 1740 South Street, Philadelphia, PA

Medical Office Space for Available for Lease

Suite 505: 1,138 RSF



Virtual Tour



Building owned and managed by  
**HEALTHCARE REALTY**



#### LEASING INFORMATION

Tom Hummel  
thummel@geisrealty.com  
215.568.2505

Dan Moller  
dmoller@geisrealty.com  
215.701.0722

# 1740 South Street, Philadelphia, PA

Medical Office Space for Available for Lease



Building owned and managed by  
**HEALTHCARE REALTY**



## LEASING INFORMATION

Tom Hummel  
thummel@geisrealty.com  
215.568.2505

Dan Moller  
dmoller@geisrealty.com  
215.701.0722

# 1740 South Street, Philadelphia, PA

Medical Office Space for Available for Lease



Building owned and managed by  
**HEALTHCARE REALTY**

**NAI** Geis Realty  
Group, Inc.

#### LEASING INFORMATION

Tom Hummel  
thummel@geisrealty.com  
215.568.2505

Dan Moller  
dmoller@geisrealty.com  
215.701.0722