

For Lease: 11,344 SF  
\$10.00/SF

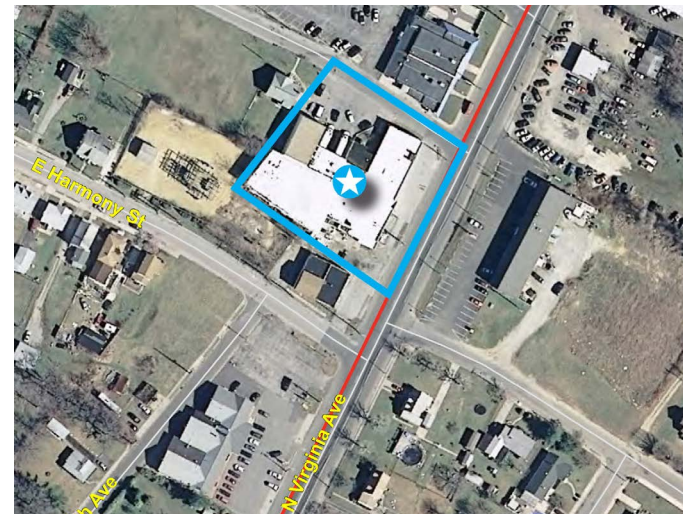


## Warehouse/Cold Storage/Flex for Lease | 18 North Virginia Avenue Penns Grove, NJ 08069

### Excellent Location For Recently Renovated Dry/Cold Storage Space!

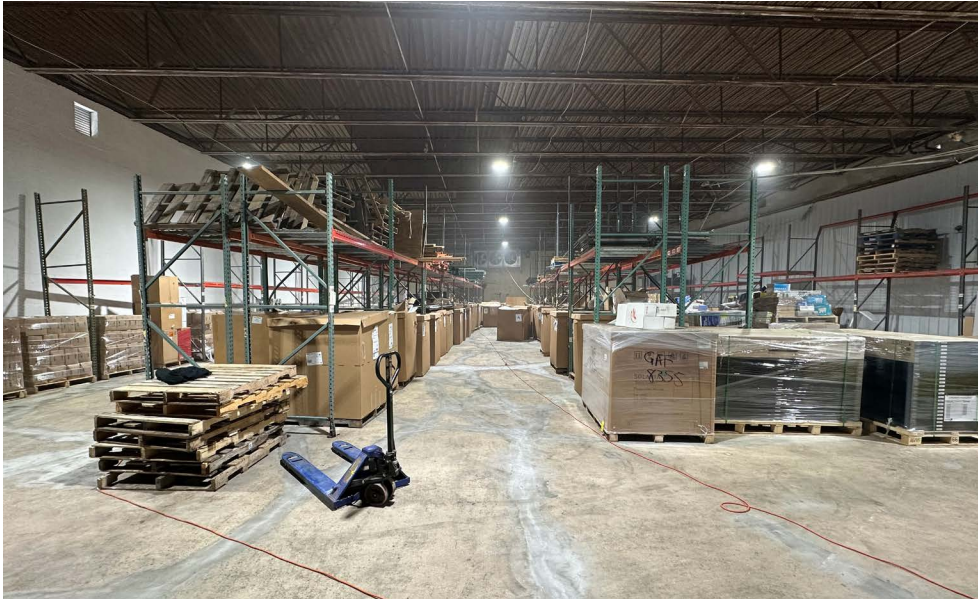
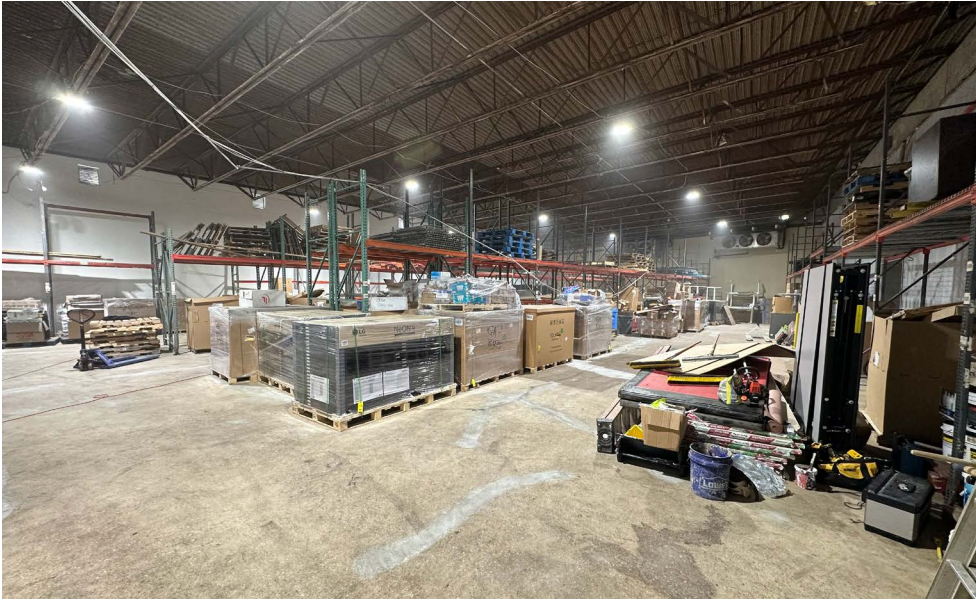
#### Property Highlights

- Fully renovated property within the last 12 months.
- Conveniently located on Route 130 in Penns Grove with easy access to major highways, Philadelphia, and Delaware
- 7 Minutes to Route 295 and NJ turnpike and just minutes to Route 322



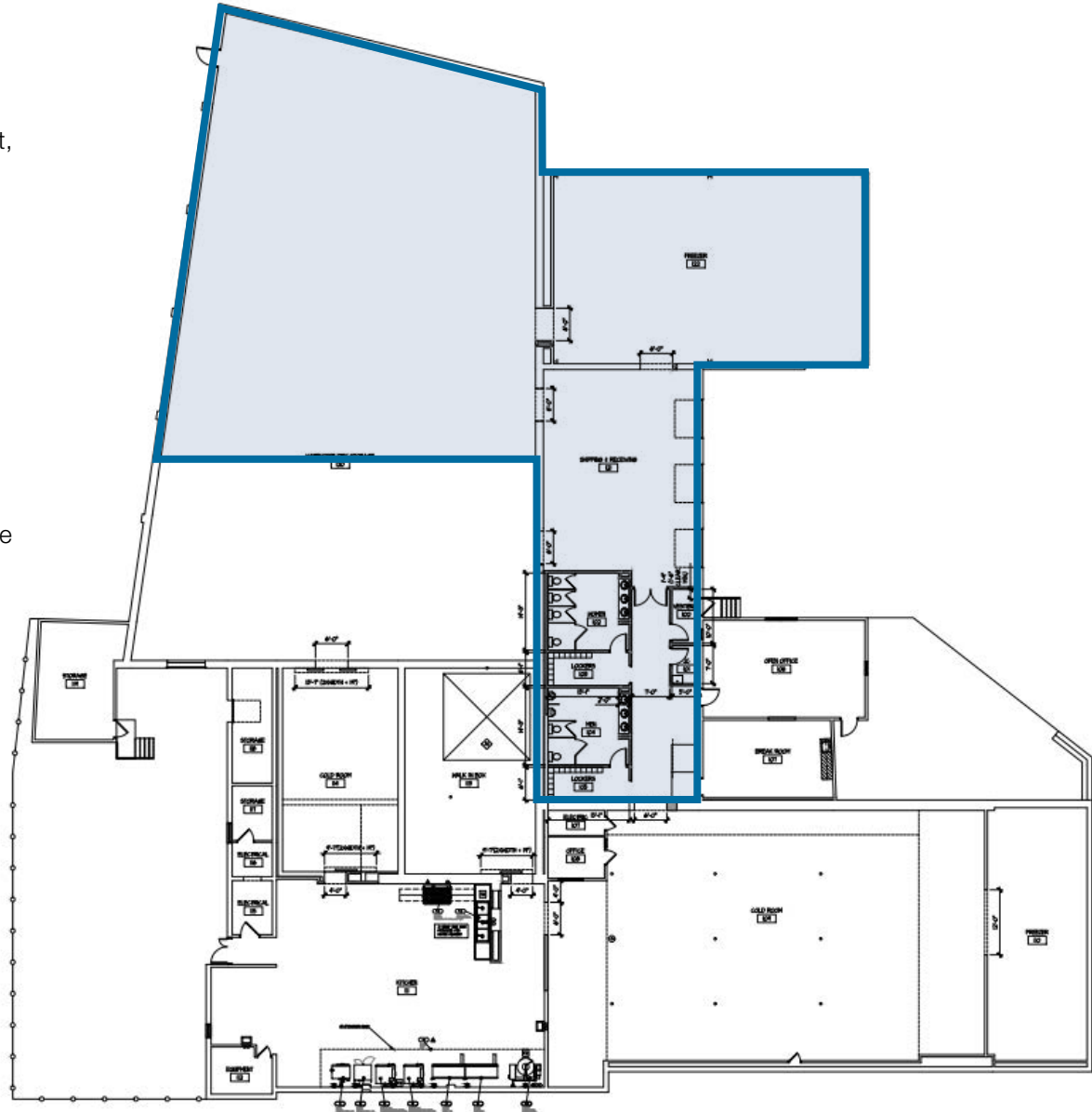
# 18 North Virginia Avenue | Penns Grove, NJ 08069

## Photos

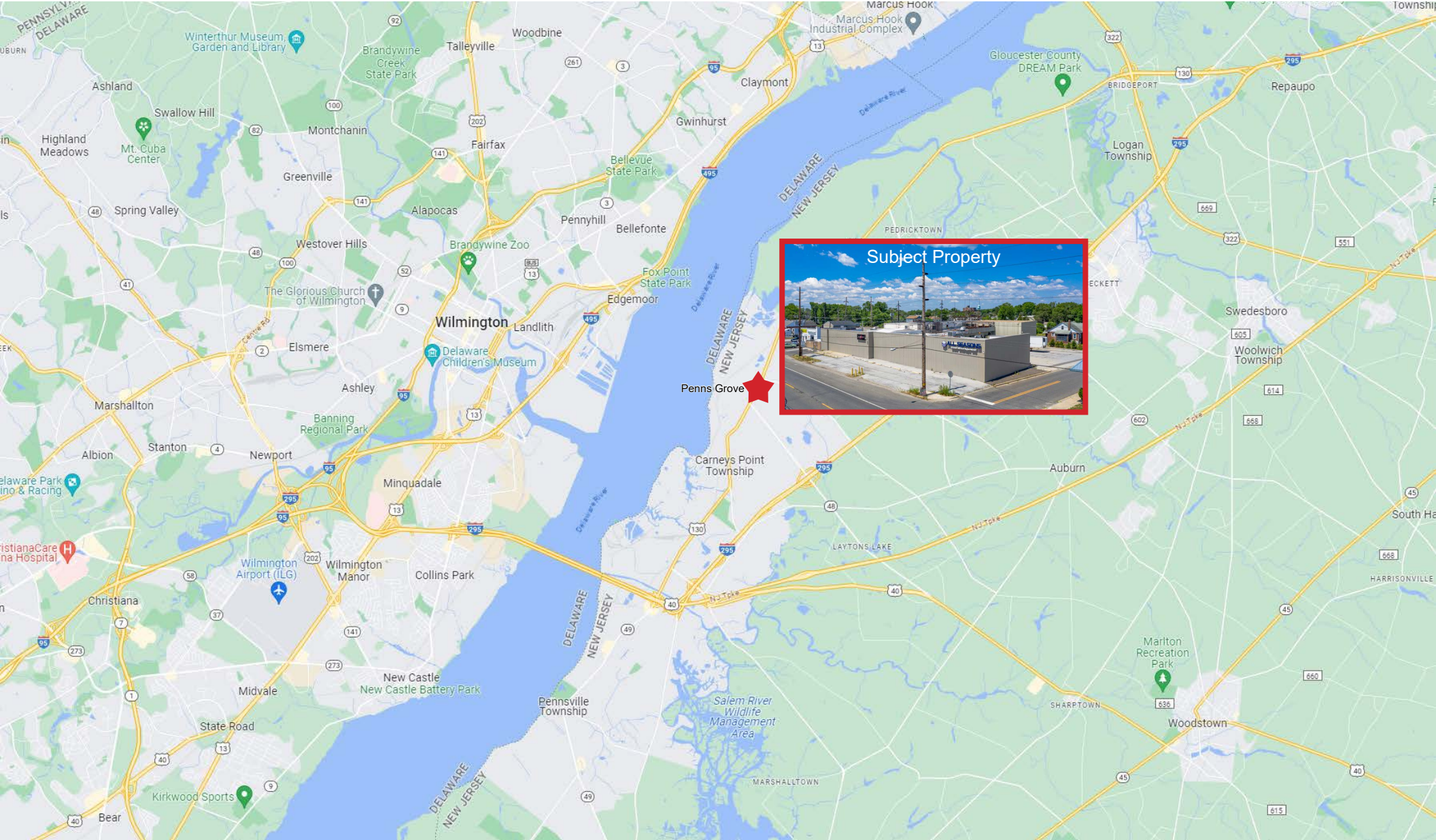


## Highlights

- Brand new reflective roof to reduce heat absorption, new HVAC system's, upgraded electrical systems, new LED lighting throughout, renovated restrooms - Reach out to broker for a full list of renovation work ±11,344 total SF of dry/cold storage space
- Space includes ±7,000 SF of dry storage and ±3,000 SF of cold storage
- Also includes ±1,344 SF of common loading & restrooms
- Cold storage space has 19' 2" clear span with storage to 40 degrees
- Dry storage space has 16' 8" clear span with existing racking in place
- The owner is open to converting the dry storage to cold storage



# 18 North Virginia Avenue | Penns Grove, NJ 08069



Dean Geis  
dgeis@geisrealty.com

[www.geisrealty.com](http://www.geisrealty.com)  
(610) 989-0300

No warranty or representation, express or implied, is made as to the accuracy of the information contained herein, and the same is submitted subject to errors, omissions, change of price, rental or other conditions, prior sale, lease or financing, or withdrawal without notice, and of any special listing conditions imposed by our principals no warranties or representations are made as to the condition of the property or any hazards contained therein are any to be implied.

# 18 North Virginia Avenue | Penns Grove, NJ 08069



Population	0.25 Mile	0.5 Miles	1 Miles
Total Population	687	2,350	6,954
Average Age	29.1	30.2	33.4
Average Age (Male)	26.2	26.9	31.0
Average Age (Female)	35.4	34.6	36.1

Households & Income	0.25 Mile	0.5 Miles	1 Miles
Total Households	272	958	3,009
# of Persons per HH	2.5	2.5	2.3
Average HH Income	\$43,180	\$40,875	\$43,063
Average House Value	\$124,134	\$129,603	\$140,007

