

# 3251 Fox Street

Philadelphia, PA 19129

## Available for Lease

1,258 SF - 10,783 SF Available

Loft-Style  
Flex/Office/Retail  
Space

### Property Highlights

- Private, off-street parking available
- Fully sprinklered building

For more information:

**Karl Schwemlein**  
karls@geisrealty.com

United Plaza, 30 South 17th Street, Suite 810, Philadelphia, PA 19103

215 568 7222 (Office)

215 253 5530 (Direct)

**NAI** Geis Realty  
Group, Inc.

NO WARRANTY OR REPRESENTATION, EXPRESS OR IMPLIED, IS MADE AS TO THE ACCURACY OF THE INFORMATION CONTAINED HEREIN, AND THE SAME IS SUBMITTED SUBJECT TO ERRORS, OMISSIONS, CHANGE OF PRICE, RENTAL OR OTHER CONDITIONS, PRIOR SALE, LEASE OR FINANCING, OR WITHDRAWAL WITHOUT NOTICE, AND OF ANY SPECIAL LISTING CONDITIONS IMPOSED BY OUR PRINCIPALS NO WARRANTIES OR REPRESENTATIONS ARE MADE AS TO THE CONDITION OF THE PROPERTY OR ANY HAZARDS CONTAINED THEREIN ARE ANY TO BE IMPLIED.



## Availability

- Suite 112: 1,258 SF (\$1,800 / month + NNN)
- Suite 106: 1,821 SF (\$3,000 / month + NNN)
- Suites 101 & 115: 10,783 SF (\$7,500 / month + NNN)

For more information:

**Karl Schwemlein**  
karls@geisrealty.com

United Plaza, 30 South 17th Street, Suite 810, Philadelphia, PA 19103

215 568 7222 (Office)

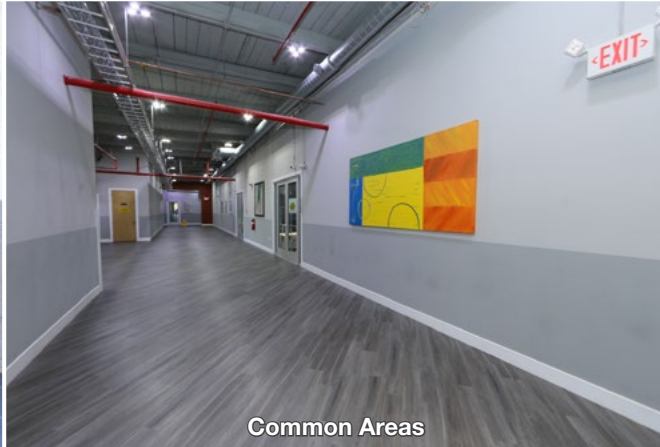
215 253 5530 (Direct)







Building Entrance



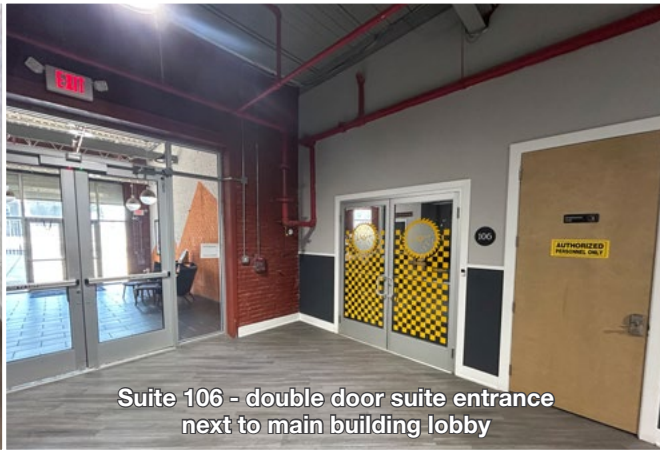
Common Areas



Shared Break Area



Suite 101



Suite 106 - double door suite entrance  
next to main building lobby



Suite 112

For more information:

**Karl Schwemlein**  
karls@geisrealty.com

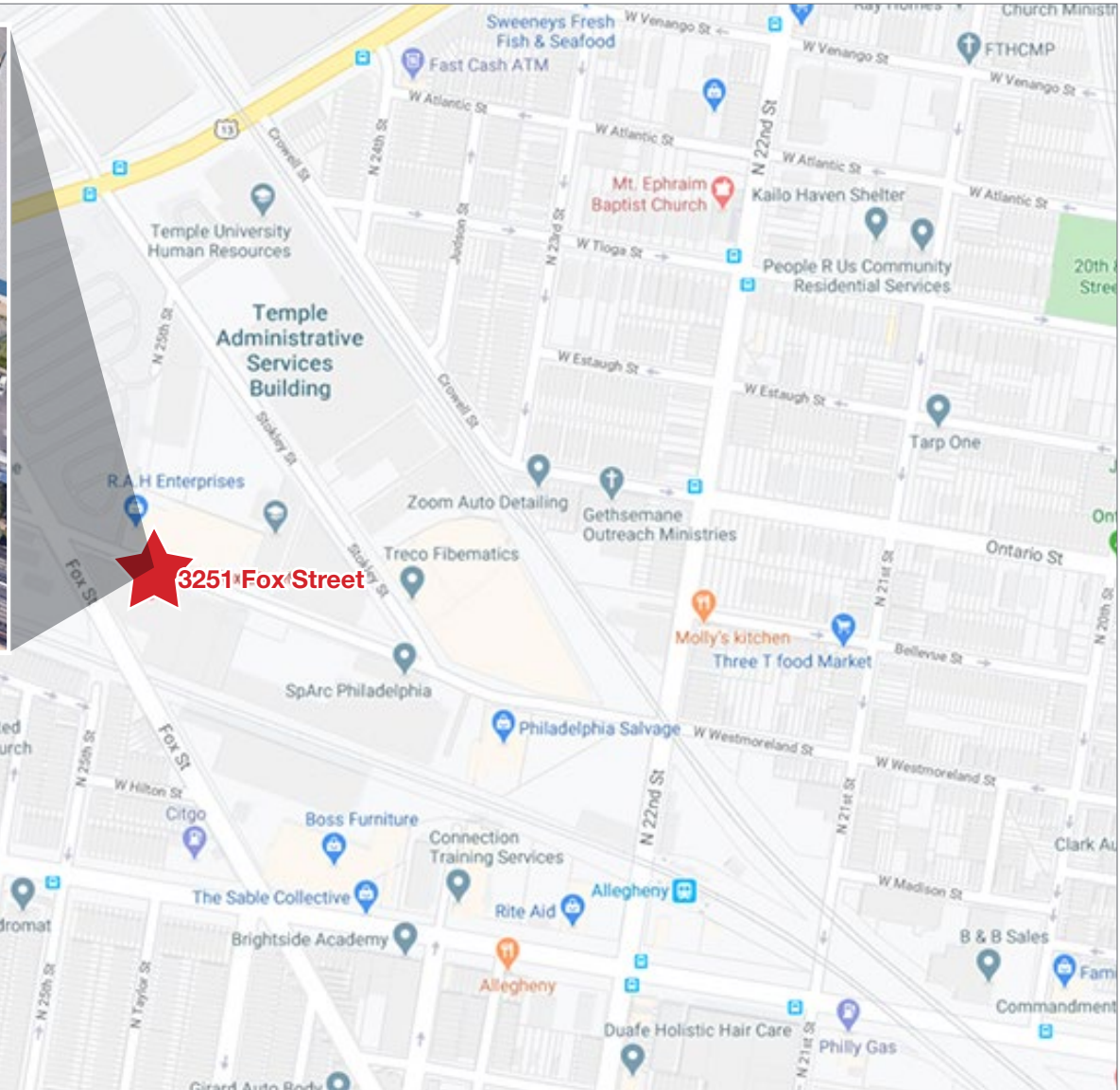
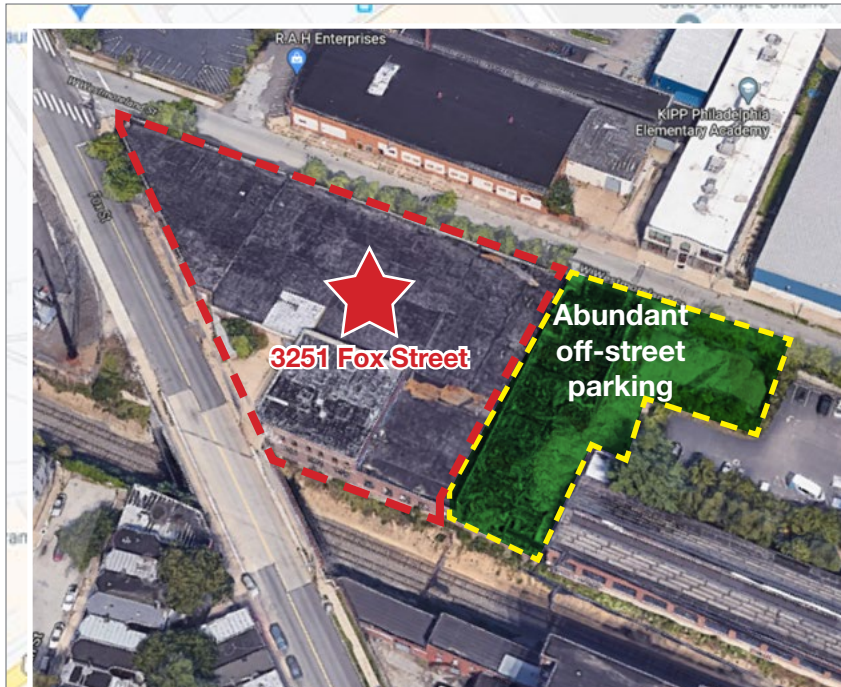
United Plaza, 30 South 17th Street, Suite 810, Philadelphia, PA 19103

215 568 7222 (Office)

215 253 5530 (Direct)







For more information:

**Karl Schwemlein**  
karls@geisrealty.com

United Plaza, 30 South 17th Street, Suite 810, Philadelphia, PA 19103

215 568 7222 (Office)

215 253 5530 (Direct)

