

AVAILABLE IMMEDIATELY  
**Medical / Office Space**

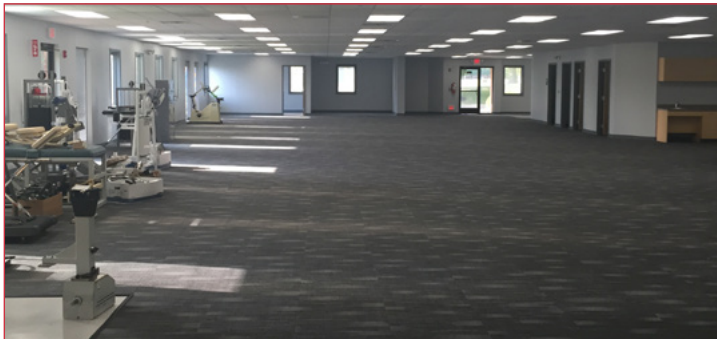
**8,100 SF  
for Sublease**



**479 Thomas Jones Way, Exton, PA 19341**

### Property Highlights

- 8,100 SF available immediately
- Term through January 31, 2023
- High ceilings, ADA bathroom, and outside seating area available
- Open floor plan
- New landscaping and refinished parking lot



### Location Highlights

- Shopping center, supermarket, banking facilities, daycare and restaurants on-site
- Less than 2 miles to both Exton Square Mall and Main Street at Exton
- Easy access to Routes 100, 202, and 30

For more information, please contact:



**Adam Knox**  
aknox@geisrealty.com  
(610) 989-0300

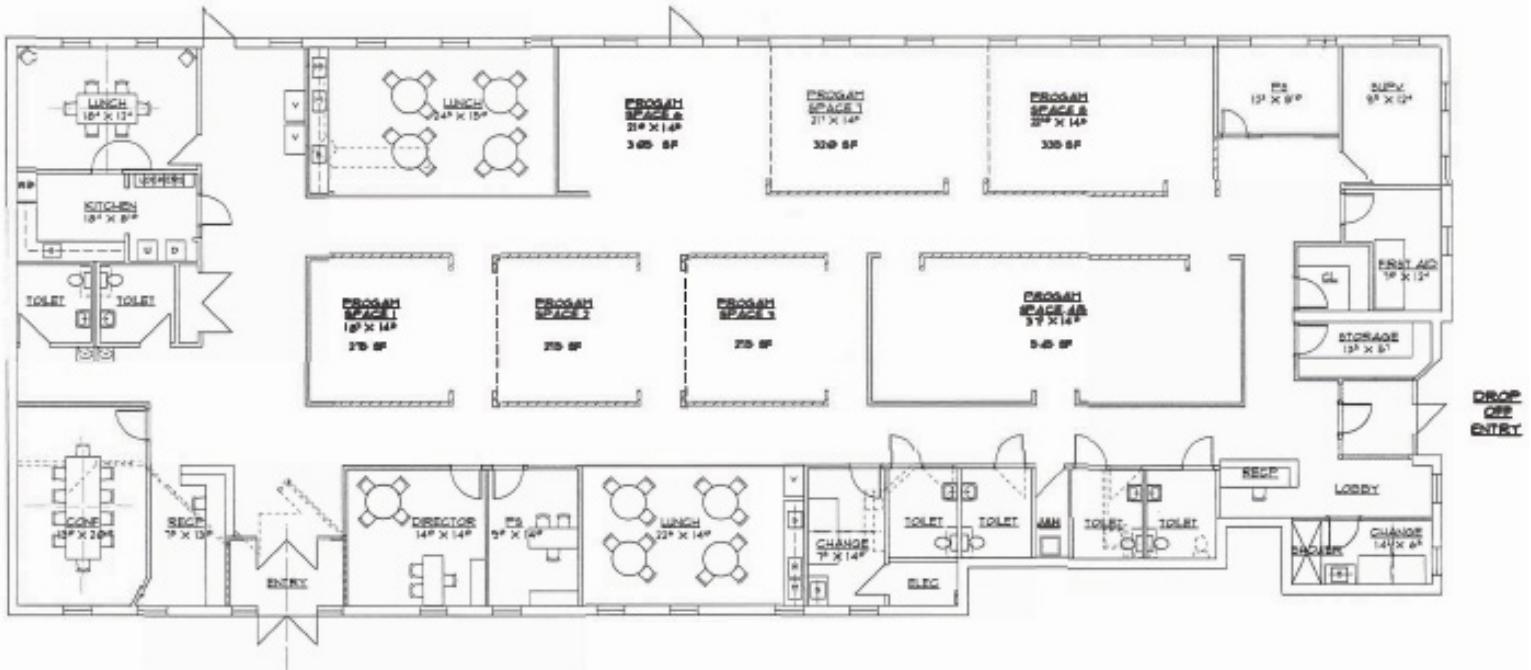
996 Old Eagle School Road  
Suite 1117  
Wayne, PA 19087

(610) 989-0300 Tel  
(610) 989-0234 Fax  
www.geisrealty.com

No warranty or representation, express or implied, is made as to the accuracy of the information contained herein, and the same is submitted subject to errors, omissions, change of price, rental or other conditions, prior sale, lease or financing, or withdrawal without notice, and of any special listing conditions imposed by our principals no warranties or representations are made as to the condition of the property or any hazards contained therein are any to be implied.

# 479 Thomas Jones Way

Exton, Pennsylvania 19341



For more information, please contact:



Adam Knox  
aknox@geisrealty.com  
(610) 989-0300

996 Old Eagle School Road  
Suite 1117  
Wayne, PA 19087

(610) 989-0300 Tel  
(610) 989-0234 Fax  
www.geisrealty.com

No warranty or representation, express or implied, is made as to the accuracy of the information contained herein, and the same is submitted subject to errors, omissions, change of price, rental or other conditions, prior sale, lease or financing, or withdrawal without notice, and of any special listing conditions imposed by our principals no warranties or representations are made as to the condition of the property or any hazards contained therein are any to be implied.