

6800 Market Street

Upper Darby, PA 19082

For Lease

Retail Space



Property Highlights

- Located within a recently renovated mixed use building with 32 apartment units
- Direct street access for retail units
- Separate elevator lobby for residences
- Well-capitalized ownership
- Highly visible with ±123.6' of total frontage
- 20,299 average vehicles per day
- Zoning: C-3

Demographics

	1 mile	3 mile	5 mile
Population (2025 estimate)	19,962	137,328	314,825
2025 Average Household income	\$64,340	\$79,802	\$96,356



For more information:

Karl Schwemlein

karls@geisrealty.com

215 253 5530

Duane Morris Plaza // 30 South 17th Street, Suite 210 // Philadelphia, PA 19103 // Phone: 215 568 7222 // Fax: 215 568 5043 // geisrealty.com

THE INFORMATION CONTAINED HEREIN HAS BEEN GIVEN TO US BY THE OWNER OF THE PROPERTY OR OTHER SOURCES WE DEEM RELIABLE. WE HAVE NO REASON TO DOUBT ITS ACCURACY, BUT WE DO NOT GUARANTEE IT. ALL INFORMATION SHOULD BE VERIFIED PRIOR TO PURCHASE OR LEASE.

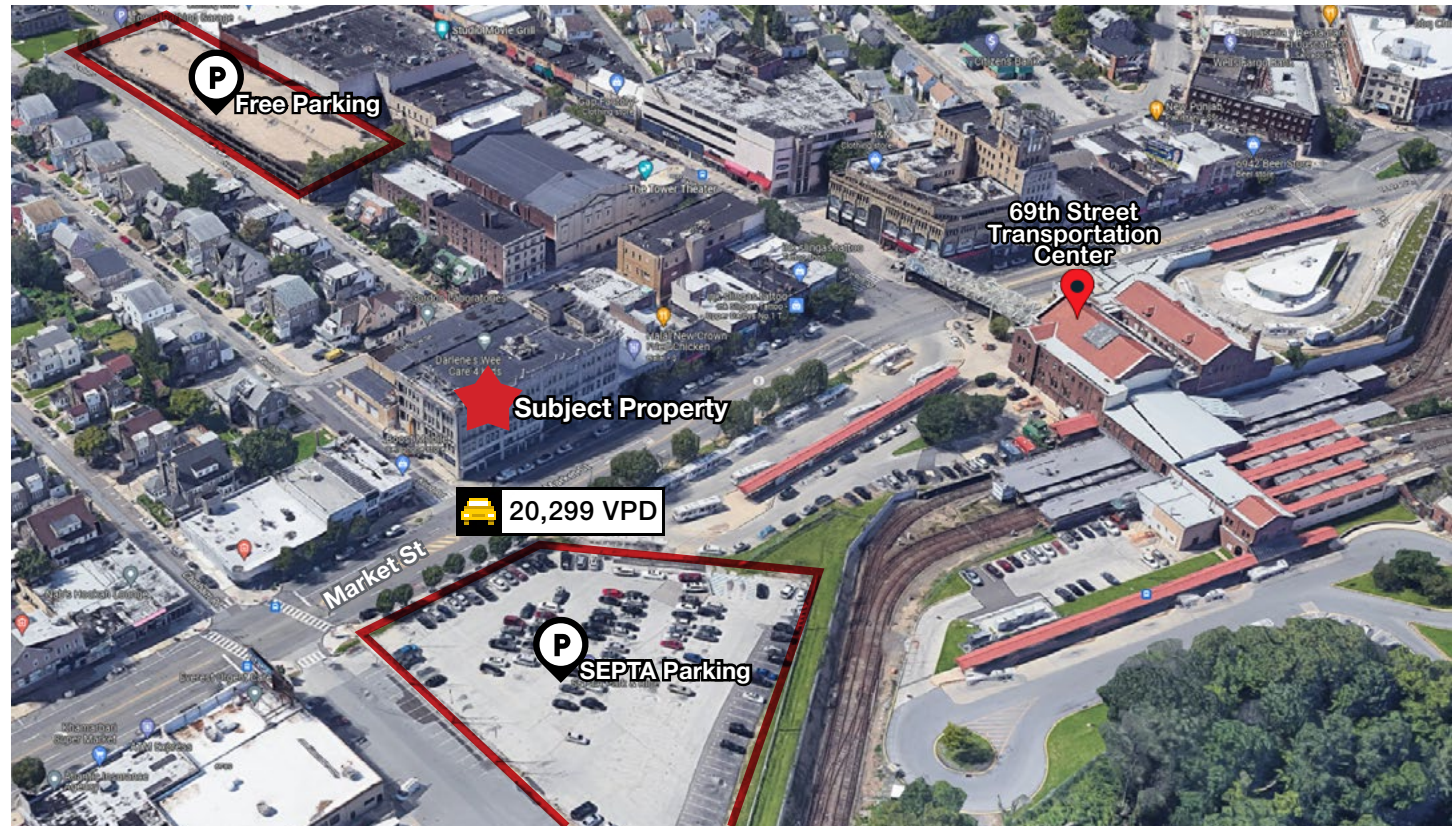
6800 Market Street

Upper Darby, PA 19082

Location

Location Highlights

- Rare lease opportunities at one of SEPTA's largest commuter destinations
- 20,299 average vehicles per day + pedestrian traffic to 69th Street Transportation Center
- Abundant on-street and nearby off-street parking
- Across the street from SEPTA surface lot (\$2/day) Monday-Friday, FREE on weekends
- FREE Parking Garage located at 6869 Chestnut Street (+/- 3 blocks)
- Access to SEPTA buses, trolley lines, subway, Norristown High Speed Line, center city & connections to regional rail via 69th Street transportation station
- Steps from amenity-rich 69th Street retail corridor
- Easy access to the Philadelphia work force & consumer base without Philadelphia taxes



For more information:

Karl Schwemlein

karls@geisrealty.com

215 253 5530

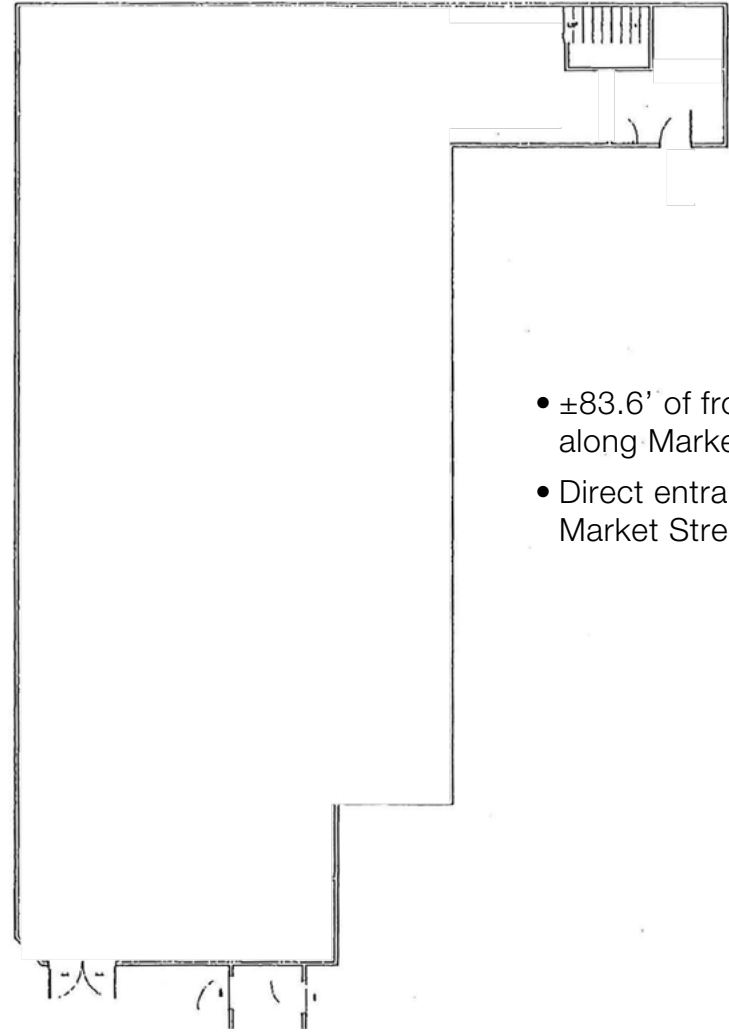
Duane Morris Plaza // 30 South 17th Street, Suite 210 // Philadelphia, PA 19103 // Phone: 215 568 7222 // Fax: 215 568 5043 // geisrealty.com

THE INFORMATION CONTAINED HEREIN HAS BEEN GIVEN TO US BY THE OWNER OF THE PROPERTY OR OTHER SOURCES WE DEEM RELIABLE. WE HAVE NO REASON TO DOUBT ITS ACCURACY, BUT WE DO NOT GUARANTEE IT. ALL INFORMATION SHOULD BE VERIFIED PRIOR TO PURCHASE OR LEASE.

6800 Market Street Upper Darby, PA 19082



3,456 SF



- ±83.6' of frontage along Market Street
- Direct entrance from Market Street



For more information:

Karl Schwemlein

karls@geisrealty.com

215 253 5530

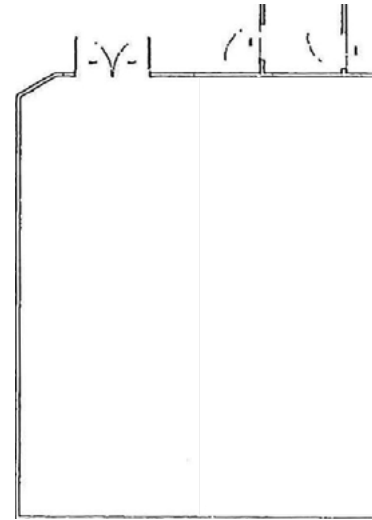
Duane Morris Plaza // 30 South 17th Street, Suite 210 // Philadelphia, PA 19103 // Phone: 215 568 7222 // Fax: 215 568 5043 // geisrealty.com

THE INFORMATION CONTAINED HEREIN HAS BEEN GIVEN TO US BY THE OWNER OF THE PROPERTY OR OTHER SOURCES WE DEEM RELIABLE. WE HAVE NO REASON TO DOUBT ITS ACCURACY, BUT WE DO NOT GUARANTEE IT. ALL INFORMATION SHOULD BE VERIFIED PRIOR TO PURCHASE OR LEASE.

6800 Market Street Upper Darby, PA 19082



1,352 SF



- ±43' of frontage along Market Street
- Direct entrance from Market Street



For more information:

Karl Schwemlein

karls@geisrealty.com

215 253 5530

Duane Morris Plaza // 30 South 17th Street, Suite 210 // Philadelphia, PA 19103 // Phone: 215 568 7222 // Fax: 215 568 5043 // geisrealty.com

THE INFORMATION CONTAINED HEREIN HAS BEEN GIVEN TO US BY THE OWNER OF THE PROPERTY OR OTHER SOURCES WE DEEM RELIABLE. WE HAVE NO REASON TO DOUBT ITS ACCURACY, BUT WE DO NOT GUARANTEE IT. ALL INFORMATION SHOULD BE VERIFIED PRIOR TO PURCHASE OR LEASE.