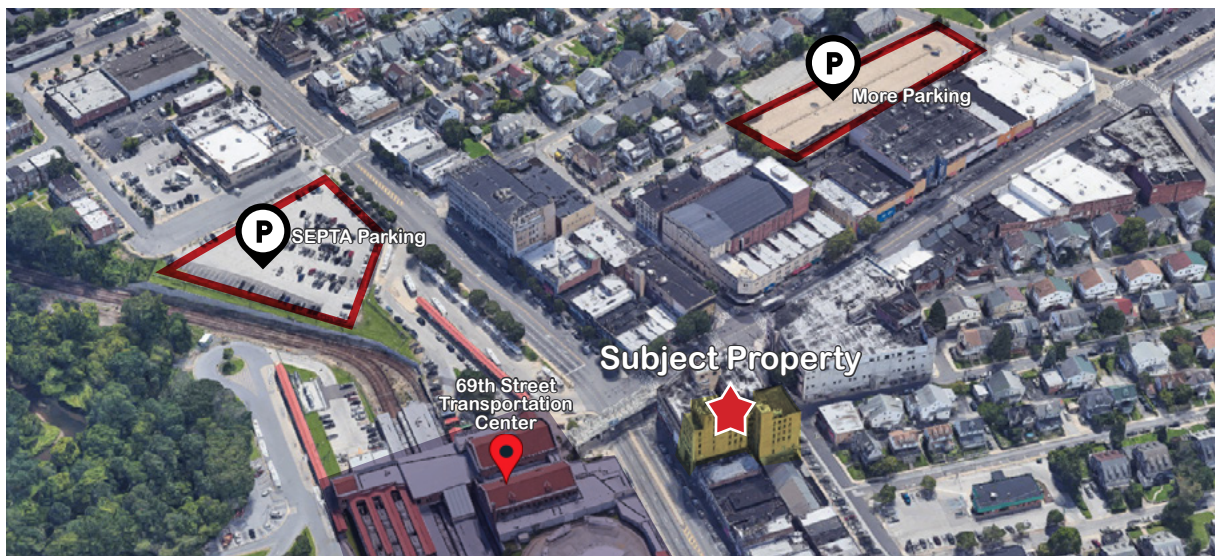


# 6908 Market Street

Upper Darby, PA 19082

## For Lease

6,635 SF - Former Event Space



### Space Highlights

- 2 sets of elevator banks
- Recently finished space with high ceilings
- Approved for 100-person occupancy
- New sprinklers to be installed by Landlord

### Location Overview

- Abundant nearby off-street parking
- 1 block from SEPTA surface lot (\$2 / day)
- FREE Parking Garage located at 6869 Chestnut St (+/- 4 blocks)
- Steps from amenity-rich 69th Street retail corridor
- Access to SEPTA buses, trolley lines, subway, Norristown High Speed Line, center city & connections to regional rail via 69th Street transportation station
- **Access the Philadelphia market without Philadelphia taxes**



For more information:

**Karl Schwemlein**

karls@geisrealty.com

215 253 5530

**Dana Wilber**

dwilber@geisrealty.com

215 701 3266

Duane Morris Plaza // 30 South 17th Street, Suite 210 // Philadelphia, PA 19103 // Phone: 215 568 7222 // Fax: 215 568 5043 // [geisrealty.com](http://geisrealty.com)

THE INFORMATION CONTAINED HEREIN HAS BEEN GIVEN TO US BY THE OWNER OF THE PROPERTY OR OTHER SOURCES WE DEEM RELIABLE. WE HAVE NO REASON TO DOUBT ITS ACCURACY, BUT WE DO NOT GUARANTEE IT. ALL INFORMATION SHOULD BE VERIFIED PRIOR TO PURCHASE OR LEASE.

6908 Market Street Upper Darby, PA 19082

## Full Floor Availability



**\*\*ACTUAL SPACE, FURNITURE NOT INCLUDED**



For more information:

**Karl Schwemlein**

[karls@geisrealty.com](mailto:karls@geisrealty.com)

215 253 5530

**Dana Wilber**

[dwilber@geisrealty.com](mailto:dwilber@geisrealty.com)

215 701 3266

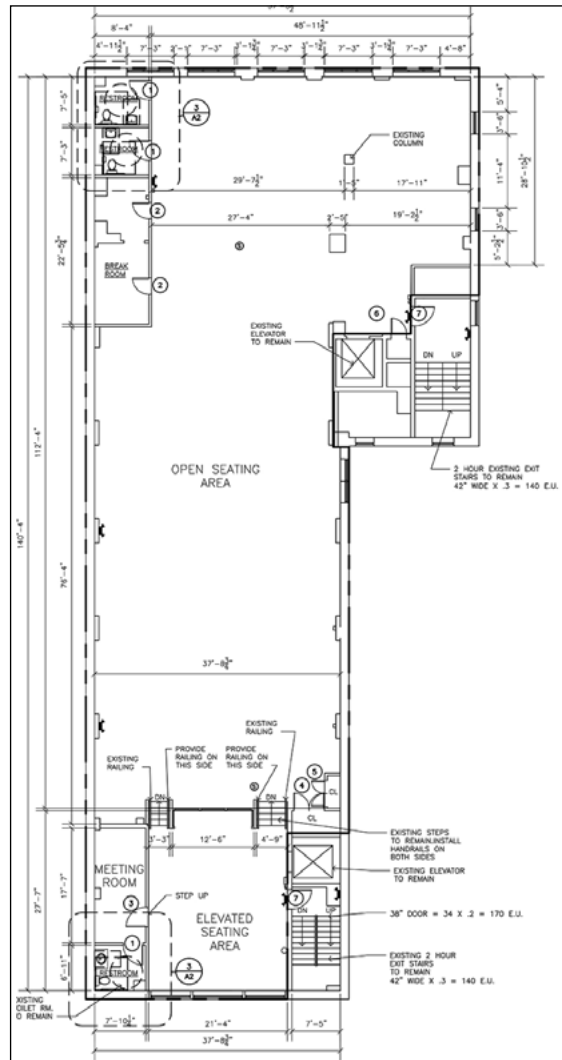
Duane Morris Plaza // 30 South 17th Street, Suite 210 // Philadelphia, PA 19103 // Phone: 215 568 7222 // Fax: 215 568 5043 // [geisrealty.com](http://geisrealty.com)

THE INFORMATION CONTAINED HEREIN HAS BEEN GIVEN TO US BY THE OWNER OF THE PROPERTY OR OTHER SOURCES WE DEEM RELIABLE. WE HAVE NO REASON TO DOUBT ITS ACCURACY, BUT WE DO NOT GUARANTEE IT.  
ALL INFORMATION SHOULD BE VERIFIED PRIOR TO PURCHASE OR LEASE.



# 6908 Market Street Upper Darby, PA 19082

# Floor Plan



6,635 SF Event Space



For more information:

Karl Schwemlein

karls@geisrealty.com

215 253 5530

Dana Wilber

dwilber@geisrealty.com

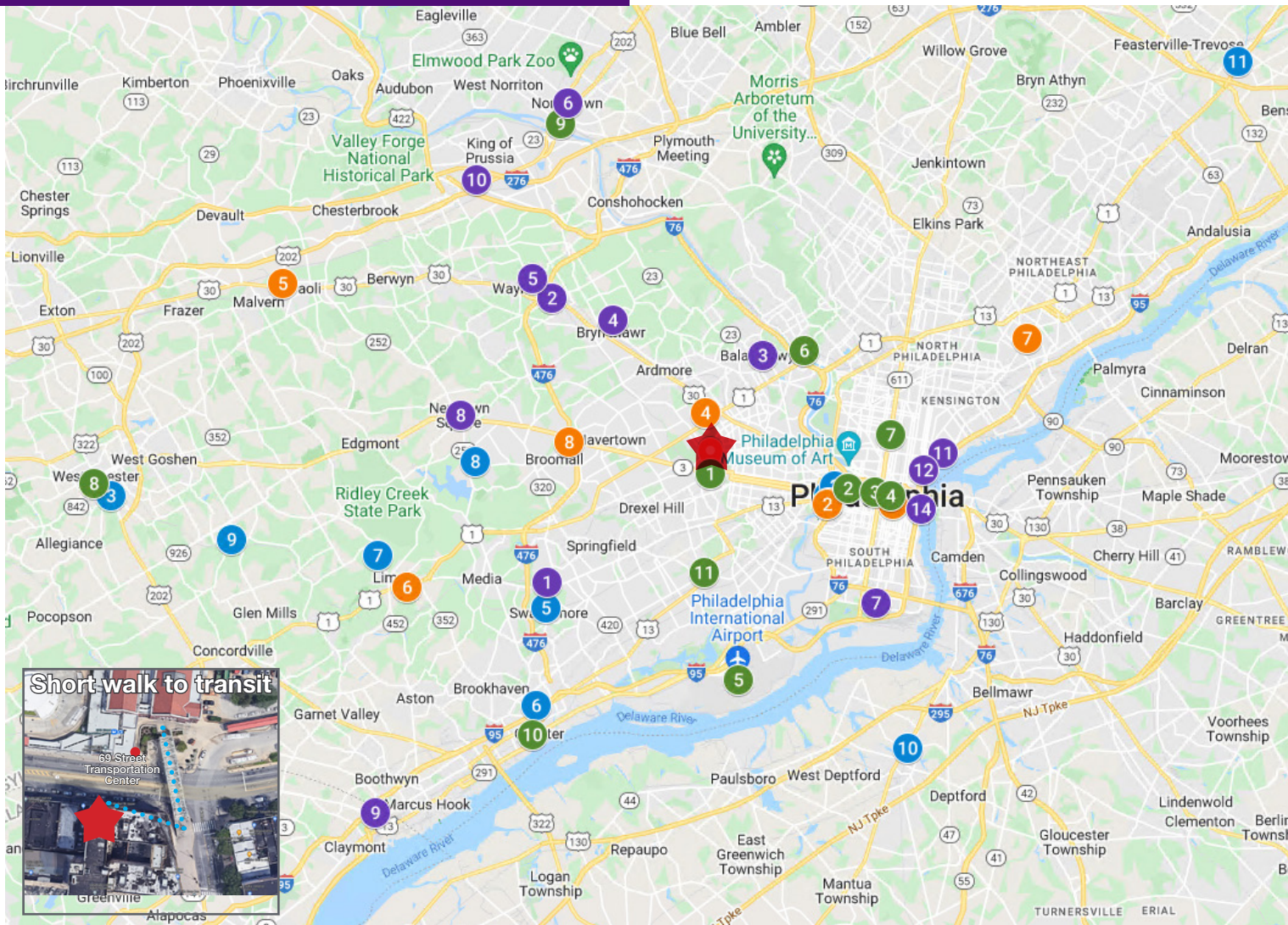
215 701 3266

Duane Morris Plaza // 30 South 17th Street, Suite 210 // Philadelphia, PA 19103 // Phone: 215 568 7222 // Fax: 215 568 5043 // [geisrealty.com](http://geisrealty.com)

THE INFORMATION CONTAINED HEREIN HAS BEEN GIVEN TO US BY THE OWNER OF THE PROPERTY OR OTHER SOURCES WE DEEM RELIABLE. WE HAVE NO REASON TO DOUBT ITS ACCURACY, BUT WE DO NOT GUARANTEE IT.  
ALL INFORMATION SHOULD BE VERIFIED PRIOR TO PURCHASE OR LEASE.

# 6908 Market Street Upper Darby, PA 19082

## Strategic Location



### PLACES OF INTEREST

1. Springfield Mall
2. Villanova
3. Bala Cynwyd
4. Bryn Mawr
5. Radnor
6. Norristown
7. South Philadelphia (Lincoln Financial Field, Wells Fargo Center, Citizens Bank Park)
8. Newtown Square
9. Tri-state mall
10. King of Prussia Mall
11. Fishtown
12. Northern Liberties
13. The Fillmore
14. The Philadelphia Waterfront

### EDUCATION

1. University of Pennsylvania
2. Drexel University
3. West Chester University
4. Bryn Mawr College
5. Swarthmore College
6. Widener University
7. Penn State University Brandywine Campus
8. Delaware County Community College
9. Cheyney University
10. Thomas Jefferson University
11. Strayer University

### HEALTHCARE

1. Hospital of the University of Pennsylvania
2. CHOP
3. Thomas Jefferson University Hospital
4. Lankenau Medical Center
5. Paoli Hospital
6. Springfield Hospital
7. Riddle Hospital
8. Jefferson Frankford Hospital
9. Crozer-Keystone at Broomall

### TRANSIT

1. 69th Street Transportation Center
2. 30th Street Station & connections to Amtrak
3. Suburban Station (regional rail)
4. Jefferson Station (regional rail)
5. Philadelphia international airport
6. Wissahickon Transportation Center
7. Broad Street Line
8. West Chester Transportation Center
9. Norristown Transportation Center
10. Chester Transportation Center
11. Darby Transportation Center



For more information:

**Karl Schwemlein**

karls@geisrealty.com

215 253 5530

**Dana Wilber**

dwilber@geisrealty.com

215 701 3266

Duane Morris Plaza // 30 South 17th Street, Suite 210 // Philadelphia, PA 19103 // Phone: 215 568 7222 // Fax: 215 568 5043 // geisrealty.com

THE INFORMATION CONTAINED HEREIN HAS BEEN GIVEN TO US BY THE OWNER OF THE PROPERTY OR OTHER SOURCES WE DEEM RELIABLE. WE HAVE NO REASON TO DOUBT ITS ACCURACY, BUT WE DO NOT GUARANTEE IT. ALL INFORMATION SHOULD BE VERIFIED PRIOR TO PURCHASE OR LEASE.